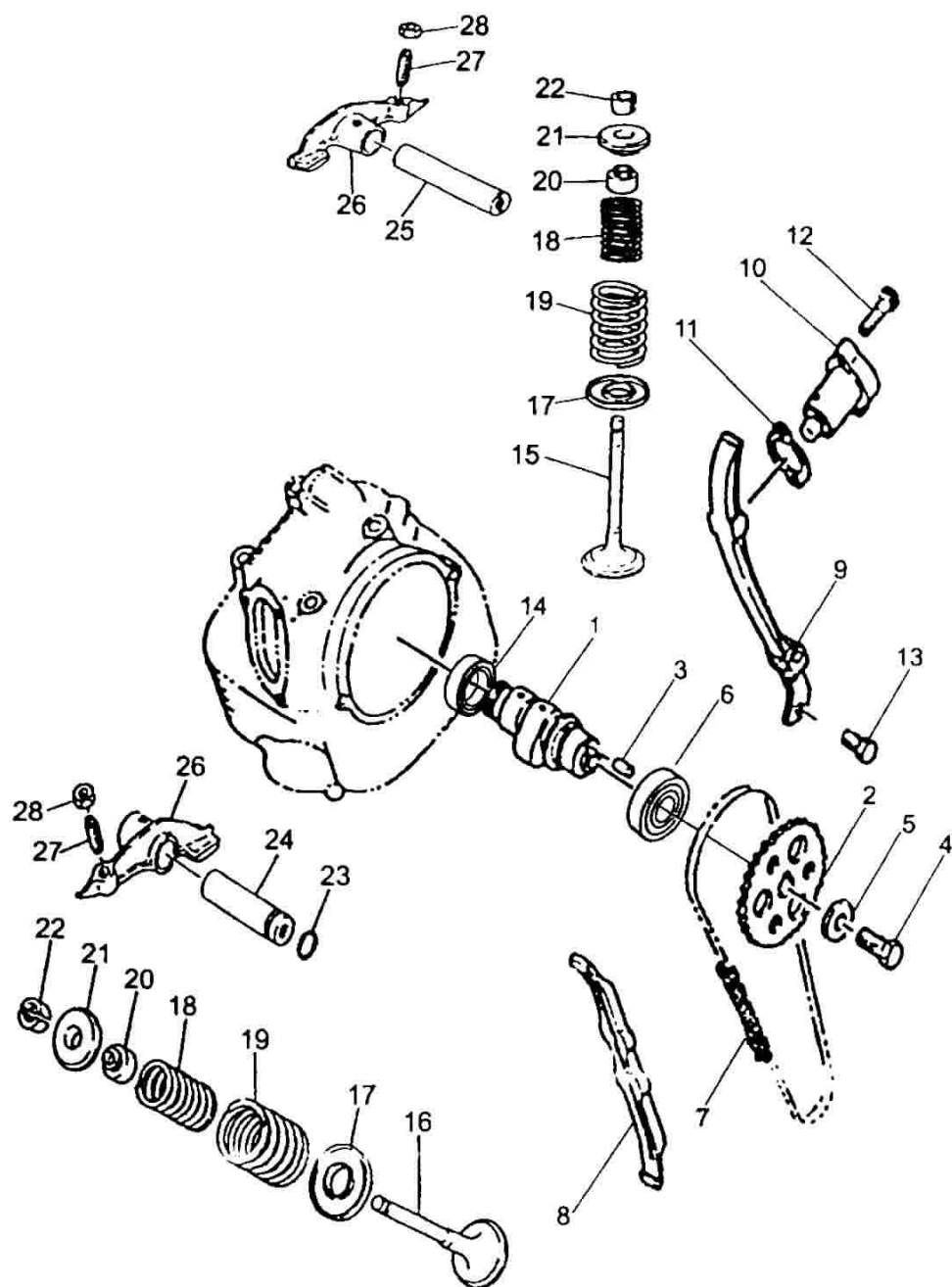


1、配气机构 Pneumatic mechanism

序 号 Ser.No	件 号 Part No	名 称	Description	数量 Q'ty
1	FG-110201-0	配气凸轮轴	Pneumatic cam shaft	1
2	FG-100401-0	正时链轮	Timing sprocket	1
3	FG-100001-0	传动销	Driving pin	1
4	GB/T5786-2000	螺栓 M10×1.25×25	Bolt M10×1.25×25	1
5	FG-100402-0	垫圈	Washer	1
6	GB/T276-1994	滚动轴承 6005-RS/C3	Rolling bearing 6005-RS/C3	1
7	FG-130000-0	正时链条	Timgin chain	1
8	FG-140000-0	下导向板	Lower guide plate	1
9	FG-150000-0	上导向板总成	Upper guide plate assy	1
10	FG-120000-0	链条张紧器	Chain tensioner	1
11	FG-100801-0	张紧器垫片	Shim tensioner	1
12	Q/JR YP80-2000	螺栓 95026-06025	Bolt 95026-06025	2
13	Q/JR YP80-2000	螺栓 95026-06014	Bolt 95026-06014	2
14	GB/T276-1994	滚动轴承 6202-Z	Rolling bearing 6202-Z	1
15	FG-110304-0	进气门	Air intake valve	1
16	FG-110303-0	排气门	Air Exhaust valve	1
17	FG-110401-0	气门弹簧座	Valve spring seat	2
18	FG-110701-0	气门内弹簧	Valve inner spring	2
19	FG-110702-0	气门外弹簧	Valve outer spring	2
20	FG-112000-0	气门杆油封	Valve stem oil seal	2
21	FG-110301-0	气门弹簧盖	Valve spring cove	2
22	FG-110302-0	气门锁夹	Valve lock clip	4
23	FG-110601-0	O 形圈	O-ring	1
24	FG-110002-0	摇臂轴 2	Rocker arm shaft 2	1
25	FG-110001-0	摇臂轴 1	Rocker arm shaft 1	1
26	FG-113000-0	气门摇臂	Valve rocker arm	2
27	FG-110851-0	调节螺钉	Adjusting screw	2
28	FG-110852-0	锁紧螺母	Lokcing nut	2

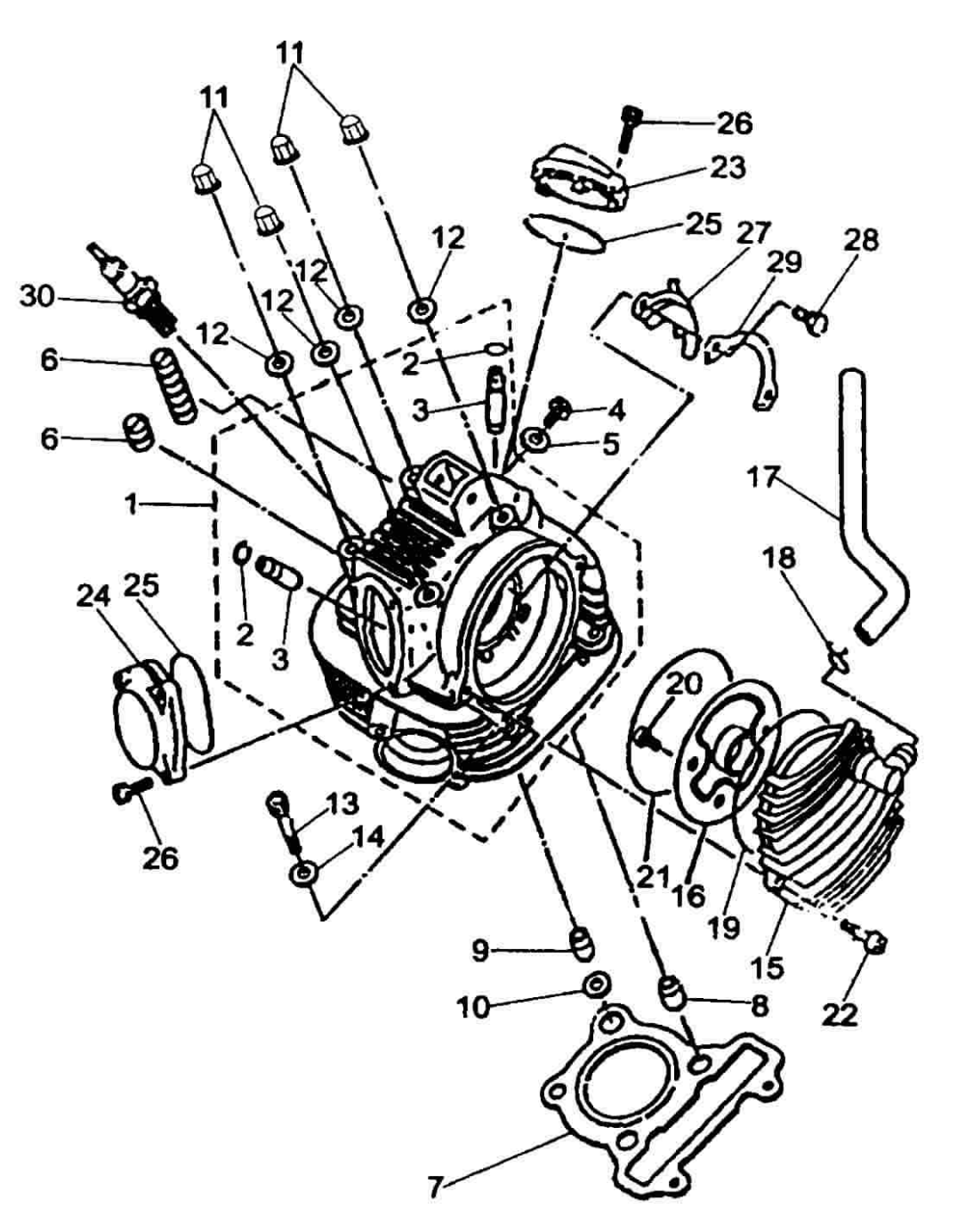
1、配气机构 Pneumatic mechanism



2、配气机构(气缸盖) Penumatic mechanism (cylinder cap)

序 号 Ser.No	件 号 Part No	名 称	Description	数量 Q'ty
1	FG-111000-0	气缸盖组合	Cylinder cap unit	1
2	FG-111701-0	钢丝挡圈	Steer wire circlip	2
3	FG-111751-0	气门导管	Guide pipe of valve	2
4	Q/JR YP80-93	螺栓 95026-06010	Bolt 95026-06010	1
5	FG-100405-0	垫圈	Washer	1
6	FG-100604-0	减震块	Damper	8
7	FG-101000-0	气缸盖垫片组合	Cylinder cap shim unit	1
8	Q/JR YP96-93	定位销 99510-14016	Alignment pin 99510-14016	2
9	FG-100002-0	定位销	Alignment pin	1
10	FG-100603-0	油封	Oil seal	1
11	ZAI-101000-0	盖形螺母	Cap nut	4
12	ZAI-100404-0	垫圈	Washer	4
13	GB70-85	螺钉 M8×45-10.9	Screw M8×45-10.9	2
14	GB848-85	垫圈 8	Washer 8	2
15	FG-103000-0	链轮室盖组合	Sproket chamber cover unit	1
16	FG-102000-0	挡油盘组合	Oil baffle unit	1
17	FG-100606-0	通气管	Air drain	1
18	FG-100701-0	卡箍	Hoop	1
19	FG-100602-0	O 形圈	O-ring	1
20	Q/JR YP81-93	螺钉 98512-06012	Screw 98512-06012	2
21	FG-100605-0	O 形圈	O-ring	1
22	Q/JR YP81-93	螺钉 98512-06020	Screw 98512-06012	2
23	FG-100202-0	上气门盖	Uppr valve cover	1
24	FG-100201-0	下气门盖	Lower valve cover	1
25	FG-100601-0	O 形圈	O-ring	2
26	GB70-85	螺钉 M6×18-10.9	Screw M6×148-10.9	5
27	FG-110403-0	压板	Pressure plate	1
28	GB5783-86	螺栓 M6×12	Bolt M6×12	2
29	FG-110402	止动板	Stop plate	1
30	DTRTC	火花塞	Spark plug	1

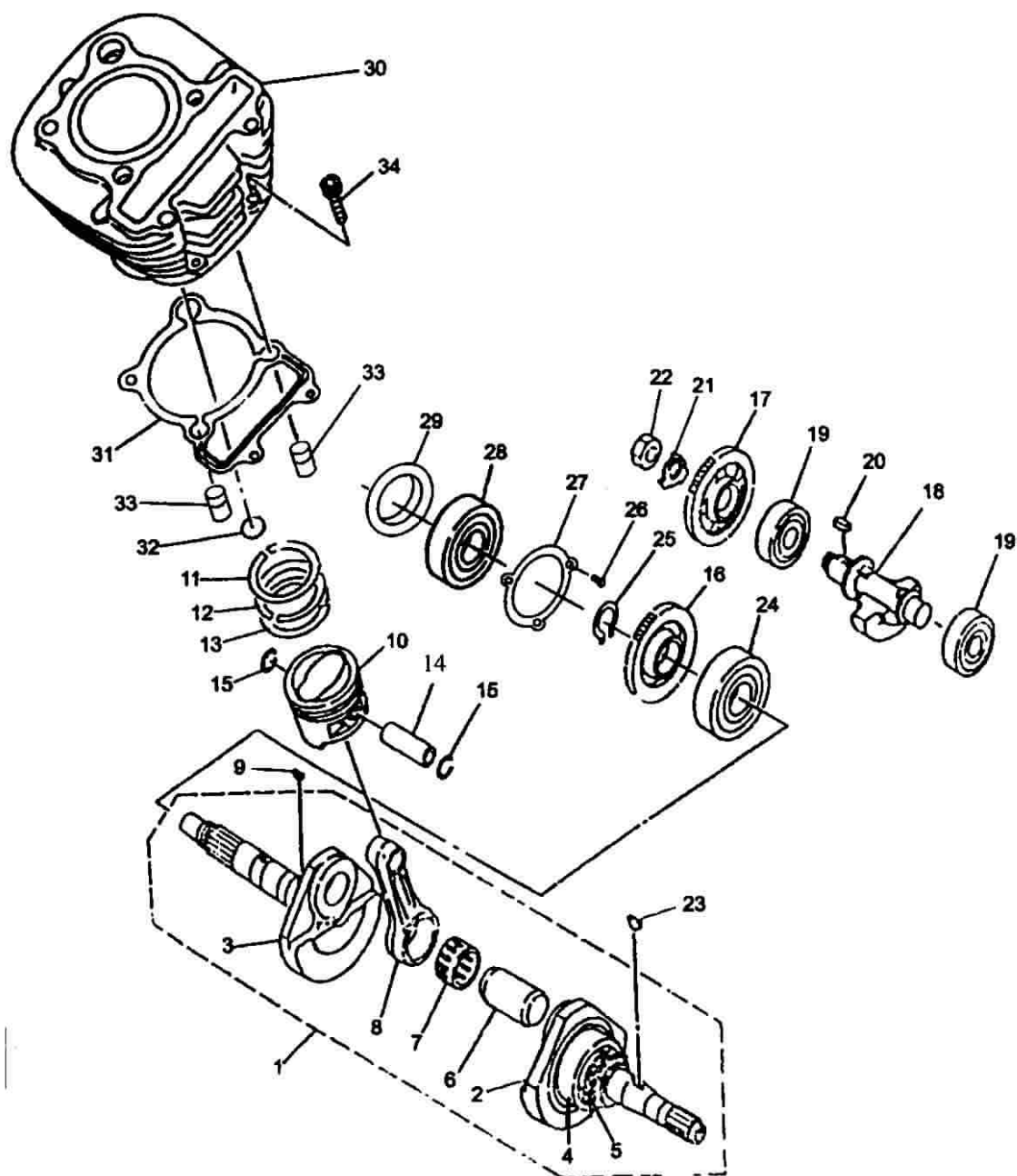
2、配气机构(气缸盖) Penumatic mechanism (cylinder cap)



3、曲轴连杆机构 Crank connecting rod mechanism

序 号 Ser.No	件 号 Part No	名 称	Description	数量 Q'ty
1	FG-210000-0	曲轴连杆总成	Crank connecting rod assy	1
2	FG-210301-0	左曲轴	Let crank	1
3	FG-211000-0	右曲轴组合	Right crank	1
4	GB/T276-94	轴承 6305	Bearing 6305	1
5	FG-210001-0	曲轴链轮	Crank sprocket	1
6	FG-210002-0	曲柄销	Crank pin	1
7	FG-212000-0	滚针轴承	Needle bearing	1
8	FG-210302-0	连杆	Connecting rod	1
9	GB1099-79	半圆键 3×5×13	Woodruff key 3×5×13	1
10	FG-220201-0	活塞	Piston	1
11	FG-220001-0	活塞环 1	Piston ring 1	1
12	FG-220002-0	活塞环 2	Piston ring 2	1
13	FG-221000-0	油环组件	Oil ring unit	1
14	FG-200001-0	活塞销	Piston pin	1
15	FG-200701-0	挡圈	Circlip	2
16	FG-200303-0	平衡轴驱动齿轮	Blance shaft driving gear	1
17	FG-200302-0	平衡轴齿轮	Balance shaft gear	1
18	FG-300301-0	平衡轴	Balance shaft	1
19	GB/T276-94	轴承 6304	Bearing	2
20	FG-200003-0	平键	Flat key	1
21	FG-200402-0	锁紧垫圈	Locking washer	1
22	FG-200851-0	螺母	Nut	1
23	GB-200002-0	半圆键	Woodruff key	1
24	GB/T276-94	轴承 6306/c4	Bearing 6306/c4	1
25	GB894.1-86	挡圈 26	Circlip 26	1
26	GB819.1-85	螺钉 M6×18	Screw M6×18	3
27	FG-200401-0	压板	Pressure plate	1
28	GB/T276-94	轴承 6203	Bearing 6203	1
29	FG-202000-0	油封	Oil sear	1
30	FG-201000-0	汽缸体组合	Cylinder unit	1

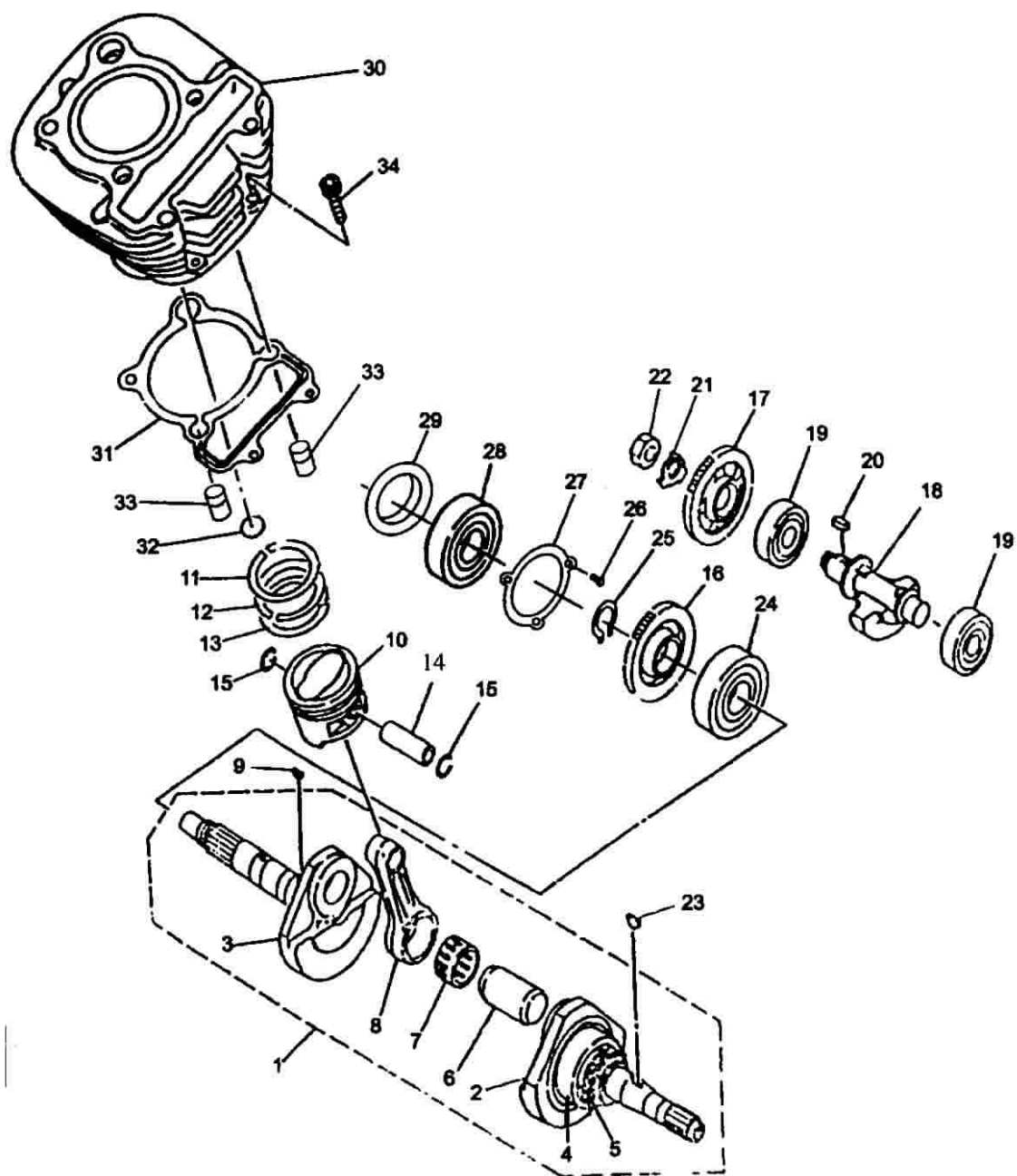
3、曲轴连杆机构 Crank connecting rod mechanism



3、曲轴连杆机构 Crank connecting rod mechanism

[illegible]

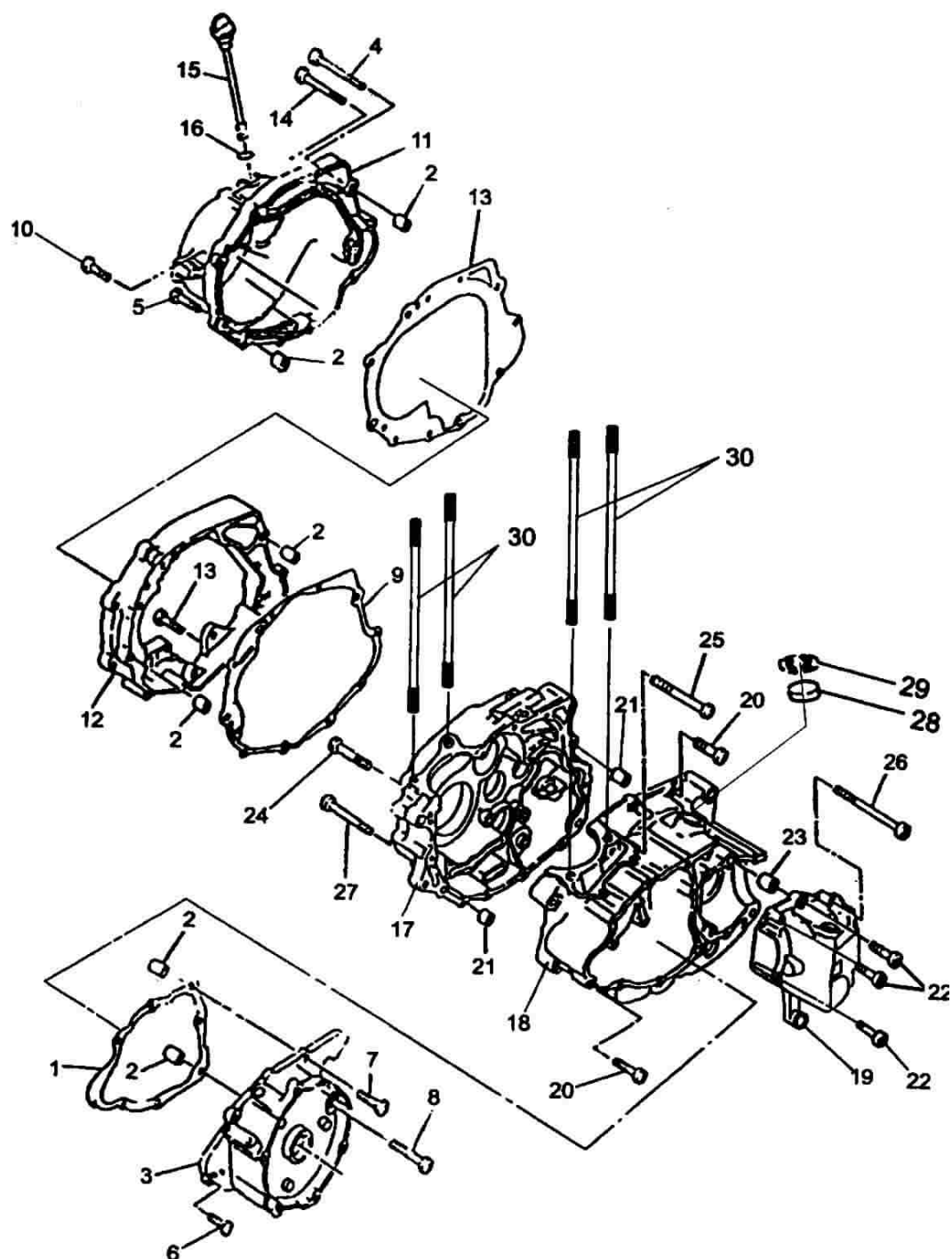
3、曲轴连杆机构 Crank connecting rod mechanism



4、箱体部分 Crankcase body part

序 号 Ser.No	件 号 Part No	名 称	Description	数量 Q'ty
1	FG-300801-0	左曲轴箱盖密封垫	Left crankcase cover gasket	1
2	Q/JR YP96-93	销 99530-12016	Pin 99530-12016	8
3	FG-300201-0	左曲轴箱盖	Left crankcase cover	1
4	Q/JR YP81-93	螺钉 98512-06080	Screw 98512-06080	1
5	Q/JR YP81-93	螺钉 98512-06030	Screw 98512-06030	1
6	Q/JR YP81-93	螺钉 98512-06025	Screw 98512-06025	5
7	Q/JR YP81-93	螺钉 98512-06050	Screw 98512-06050	1
8	Q/JR YP81-93	螺钉 98512-06060	Screw 98512-06060	1
9	FG-300802-0	右连接箱密封垫	Right connecting case gasket	1
10	Q/JR YP81-93	螺钉 98512-06040	Screw 98512-06040	7
11	FG-340000-0	右曲轴箱盖	Right crankcase cover	1
12	FG-300202-0	右连接箱	Right connecting case	1
13	FG-300803-0	右曲轴箱盖密封垫	Right crankcase cover gasket	1
14	Q/JR YP81-93	螺钉 98512-06070	Screw 98512-06070	5
15	FG-301000-0	油尺	Oil dipstic	1
16	ZA1-300601-0	O 形圈	O-ring	1
17	FG-320000-0	右曲轴箱总成	Right crankcase assy	1
18	FG-310000-0	左曲轴箱总成	Left crankcase assy	1
19	FG-300203-0	后传动盖	Rear driving cover	1
20	Q/JR YP81-93	螺钉 98512-06030	Screw 98512-06030	7
21	FA-300001-93	定位销 Φ10×14	Alignmetn pin Φ10×14	2
22	GB/T70-85	螺钉 M6×35-10.9	Screw M6×35-10.9	5
23	FA-300001-0	销 Φ10×14	Ping Φ10×14	2
24	Q/JR YP81-93	螺钉 98512-06060	Screw 98512-06060	1
25	Q/JR YP81-93	螺钉 98512-06085	Screw 98512-06085	1
26	GB70-85	螺钉 M6×160-10.9	Screw M6×160-10.9	1
27	FG-302000-0	螺钉 98512-06075	Screw 985152-06075	1
28	FG-302000-0	堵头	Sprue	1
29	GB893.1-86	挡圈 28	Circlip 28	1
30	FG-300851-0	双头螺栓	Doutble-head screw	4

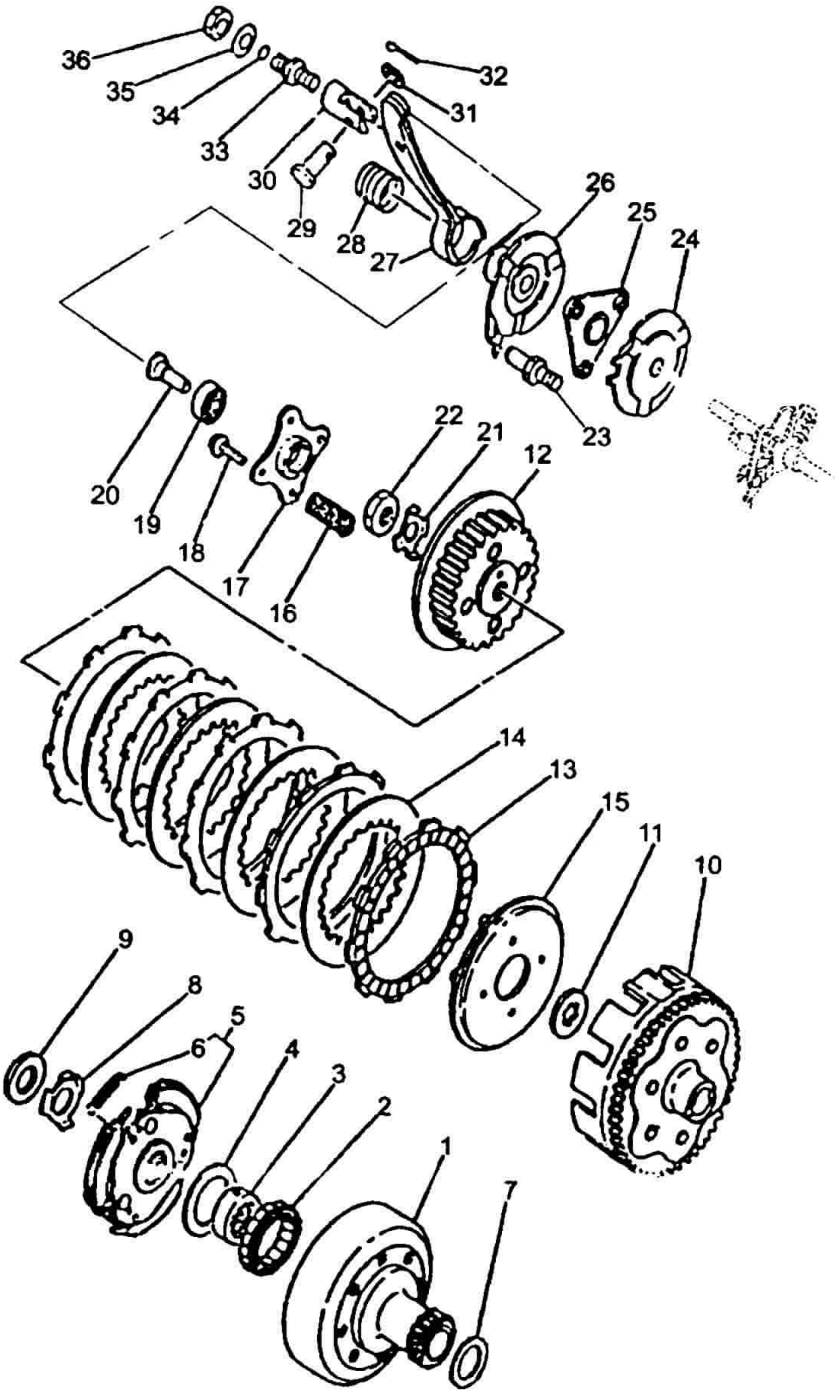
4、箱体部分 Crankcase body part



5、离合器 Clutch

序 号 Ser.No	件 号 Part No	名 称 Description	数量 Q'ty
1	FG-411000-0	主离合器罩总成 Main clutch case assy	1
2	FG-413000-0	超越离合器 Overeach clutch	1
3	FG-410001-0	内花键套 Inner spline cover	1
4	FG-410401-0	垫圈 Washer	1
5	FG-414000-0	主离合器蹄块总成 Main clutch shove assy	1
6	FG-414701-0	拉簧 Tension spring	3
7	FG-400402-0	垫圈 Washer	1
8	FG-400401-0	锁紧垫圈 Locking washer	1
9	FG-400854-0	螺母 Nut	1
10	FG-421000-0	离合器齿轮组合 Clutch gear unit	1
11	FG-420403-0	花键垫圈 Spline washer	1
12	FG-423000-0	离合器轮毂组合 Clutch hub unit	1
13	FG-422000-0	摩擦片 Friction plate	5
14	FG-420402-0	离合器片 Clutch plate	4
15	FG-420201-0	压盘 Pressure disc	1
16	FG-420701-0	离合器弹簧 Clutch spring	4
17	FG-420401-0	压盖 Pressure cover	1
18	FG-424000-0	带垫螺钉 Screw with wahsr	4
19	GB/T 276-94	轴承 6000 Bearing 6000	1
20	FG-400301-0	离合器顶杆 Clutch post rod	1
21	FG-400403-0	锁紧垫圈 Locking wahser	1
22	FG-200851-0	螺母 Nut	1
23	FG-400001-0	导向杆 Guide rod	1
24	FG-400404-0	下凸轮板 Lower cam plate	1
25	FG-401000-0	钢球架组合 Steel ball bracket unit	1
26	FG-402000-0	上凸轮板组合 Upper cam plate unit	1
27	FG-403000-0	操纵摇臂组合 Operation rocker arm unit	1
28	FG-400701-0	压簧 Compression spring	1
29	FG-400852-0	连接销 Connecting pin	1
30	FG-400002-0	支承座 Support seat	1

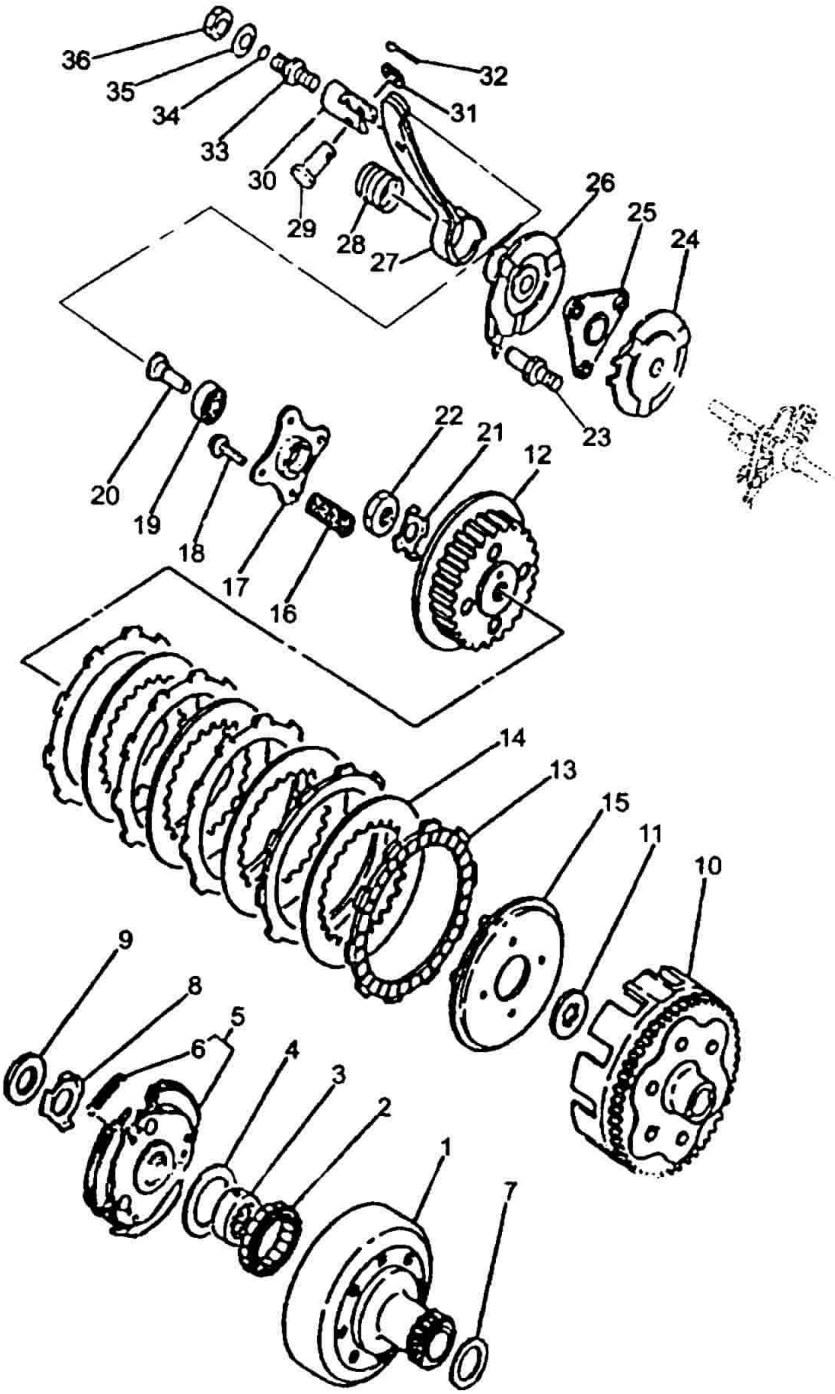
5、离合器 Clutch



5、离合器 Clutch

[illegible]

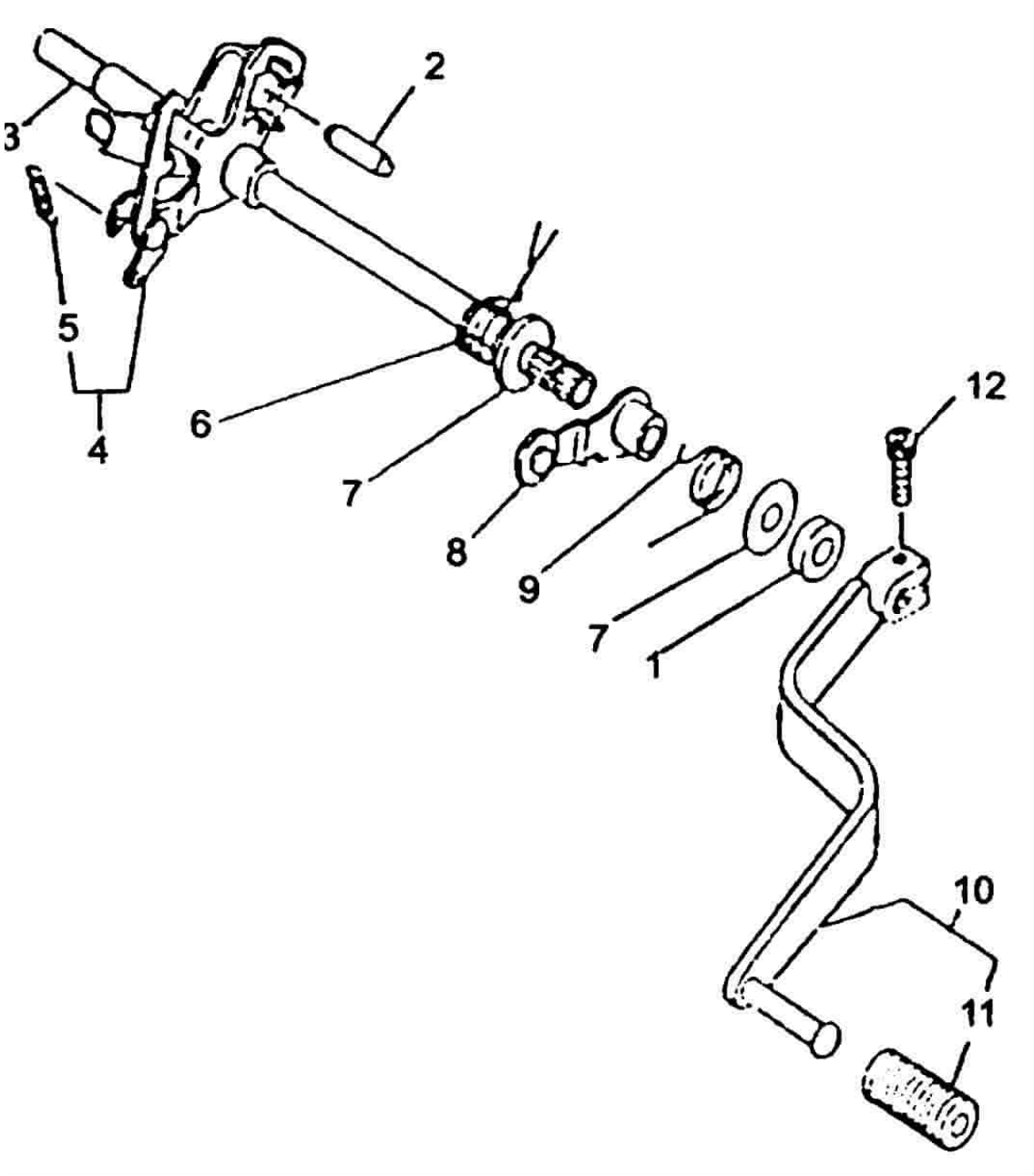
5、离合器 Clutch



6、传动、换档机构(换档操纵机构) Traunsmission and gear shift device (Gear shift operation device)

[illegible]

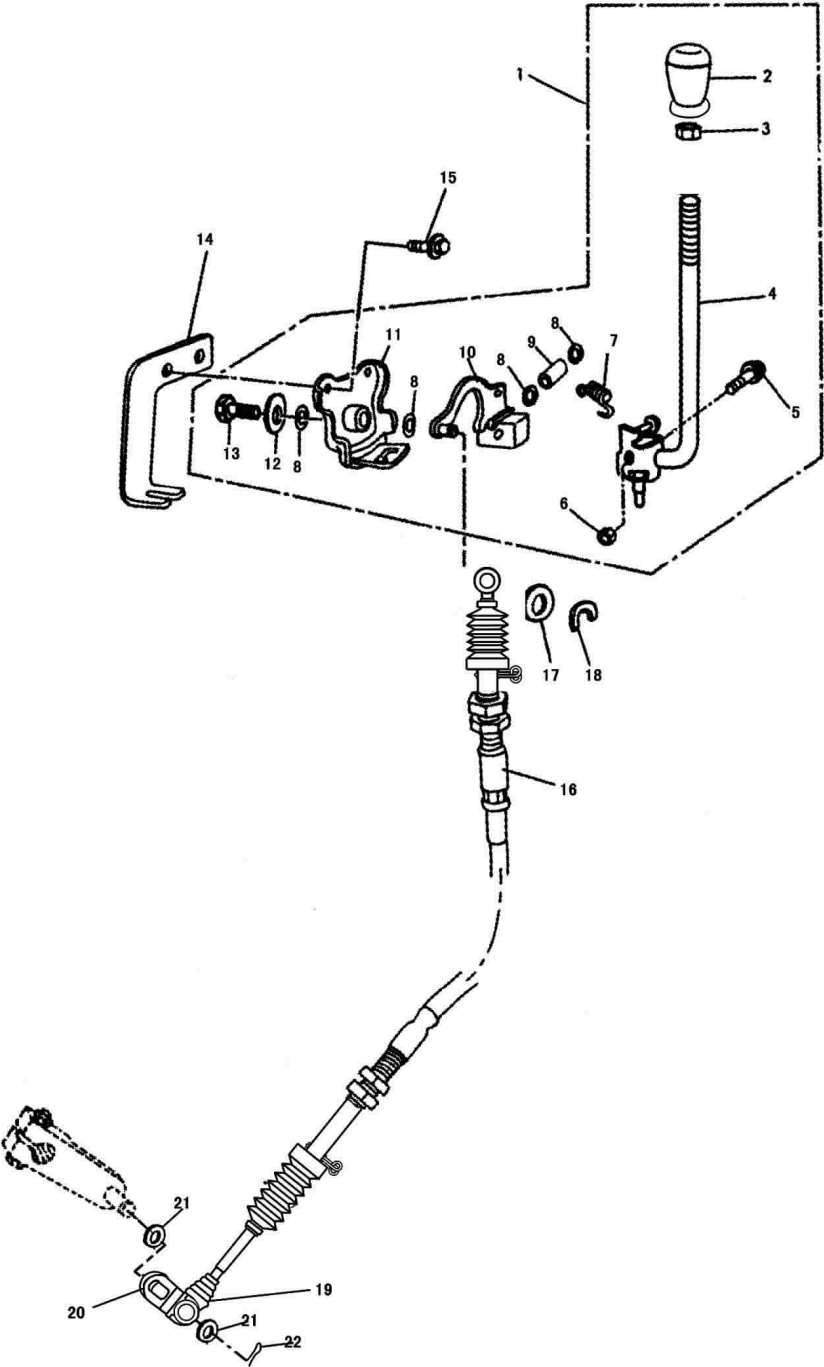
6、传动、换档机构(换档操纵机构) Traunsmission and gear shift device (Gear shift operation device)



7、倒档手柄机构 Reverse lever device

序 号 Ser.No	件 号 Part No	名 称	Description	数量 Q'ty
1	SSM4-360000-0	倒挡转换操纵机构	Transforming control mechanism for reverse lever device	1
2	SSM4-360602-0	手柄	Handle lever	1
3	GB/T6172-1986	螺母 M12	Nut M12	1
4	SSM4-362000-0	操纵杆组合	Control rod unit	1
5	GB/T16674-1996	螺栓 M6×35	Bolt M6×35	1
6	GB/T6177-1986	螺母 M6	Nut M6	1
7	SSC4-360701-0	拉簧	Tension spring	1
8	GB/T3452.1-1992	O 型圈 12×2.5	O-ring 12×2.5	4
9	SSC4-360001-0	衬套	Bushing	1
10	SSM4-363000-0	转臂组合	Swaying arm unit	1
11	SSM4-364000-0	安装支承组合	Attachment bracing unit	1
12	GB/T 96-1985	垫圈 6-140HV	Gasket 6-140HV	1
13	GB/T16674-1996	螺栓 M6×16	Bolt M6×16	1
14	SSM0-000401-0	倒挡拉索上固定支承	Upper locking board of reverse cable	1
15	GB/T16674-1996	螺栓 M6×16	Bolt M6×16	1
16	SSM4-280000-0	倒挡拉索组合	reverse cable assy	1
17	GB/T 97.1-2002	垫圈 8	Gasket 8	1
18	GB/T 896-1986	挡圈 6	Retaining ring 6	1
19	FG-590604-0	后护套	Back protecting cover	1
20	F15-500401-2	倒挡拉杆板	Reverse tension rod	1
21	GB/T 71-85	垫圈 6	Gasket 6	2
22	GB/T 91-1986	销 1.6×4	Pin 1.6×4	1

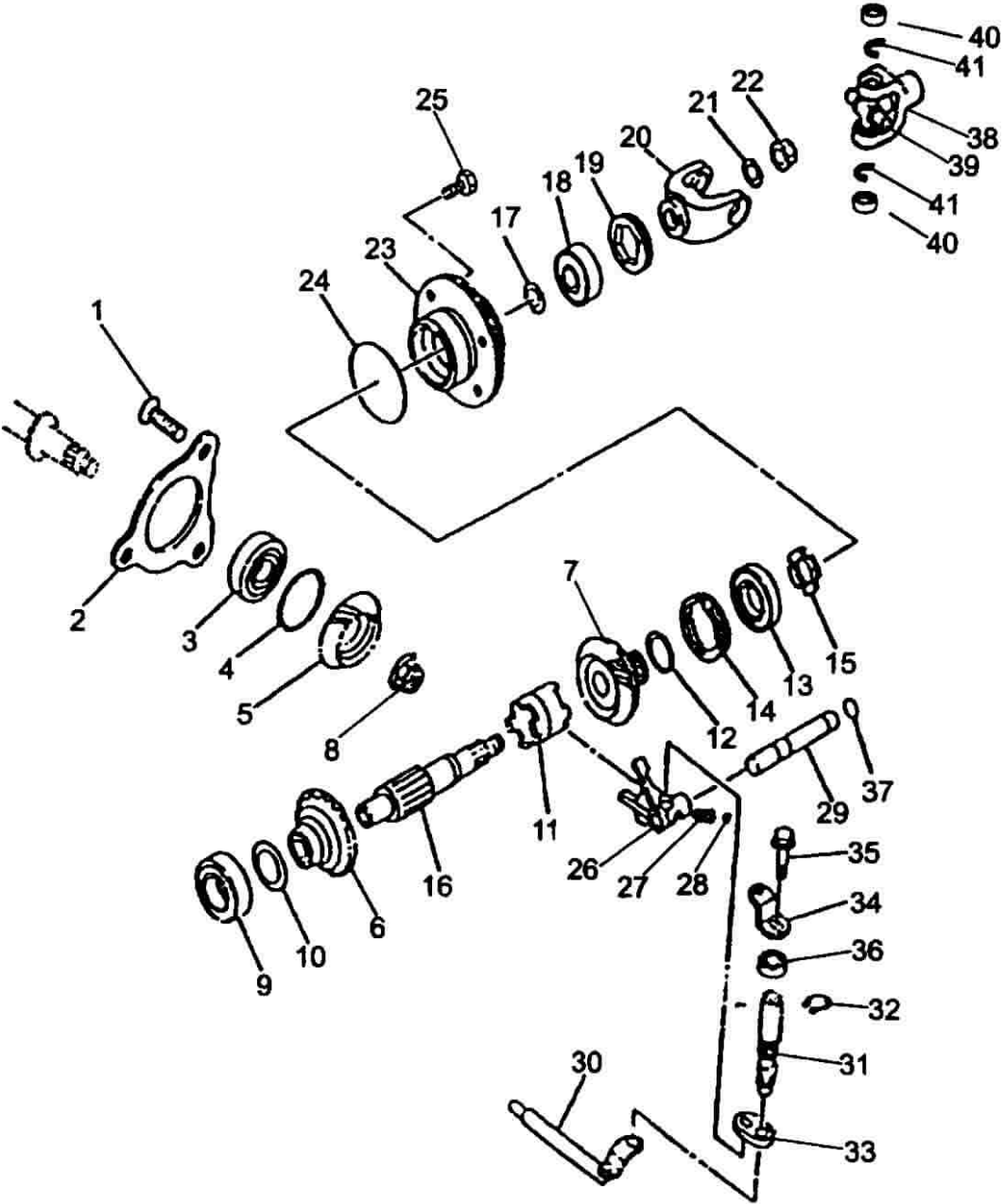
7、倒档手柄机构 Reverse lever device



8、传动、换档机构(输出机构) Transmission and gear shift device (Ontput device)

序 号 Ser.No	件 号 Part No	名 称 Description	数量 Q'ty
1	GB819-85	螺钉 M8×25 Screw M8×25	3
2	FG-500401-0	压板 Pressure plate	1
3	GB/T276-1994	轴承 6304 Bearing 6304	1
4	FG-500408-0	垫圈 Washer	1
	FG-500471-0		1
	FG-500406-0		1
	FG-500409-0		1
5	FG-500304-0	输出齿轮 Final gear	1
6	FG-581000-0	正档齿轮组合 Forward gear unit	1
7	FG-583301-0	倒档齿轮 Reversse geat	1
8	FG-500851-0	螺母 Nut	1
9	GB/T276-94	轴承 6006 Bearing 6006	1
10	FG-580407-0	垫圈 Washer	1
	FG-580406-0		1
	FG-580405-0		1
	FG-580408-0V		1
11	FG-580302-0	连接爪 Connecting paw	1
12	FG-583403-0	垫圈 Washer	1
	FG-583402-0		1
	FG-583401-0		1
	FG-583404-0		1
13	FG-584000-0	轴承 Bearing	1
14	FG-583851-0	螺套 Nut sleeve	1
15	FG-583852-0	异形左旋螺母 Shaped left harded nut	1
16	FG-580301-0	输出轴 Output shaft	1
17	FG-580404-0	垫圈 Washer	1
	FG-580403-0		1
	FG-580409-0		1
	FG-580410-0		1
	FG-580411-0		1

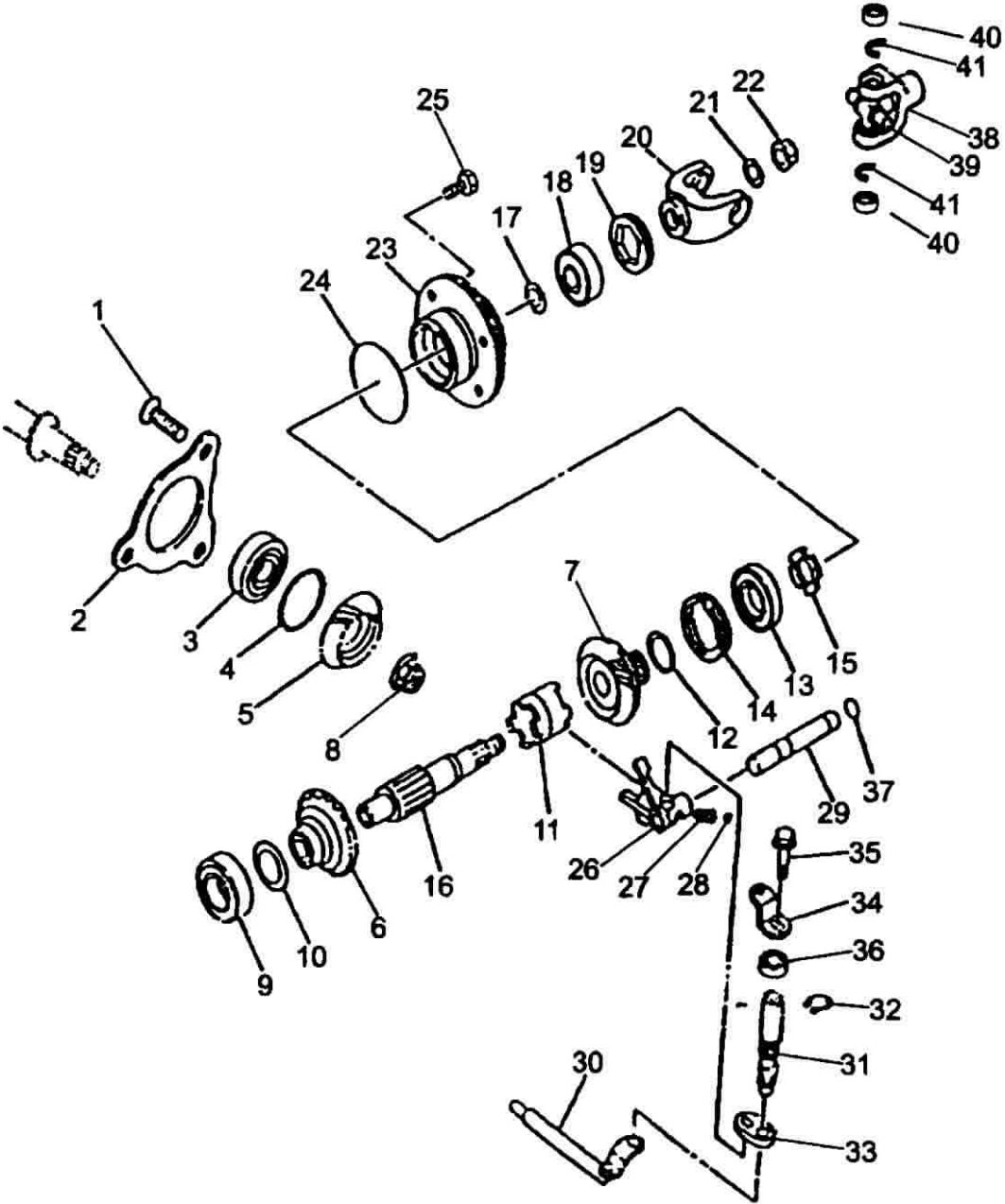
8、传动、换档机构(输出机构) Transmission and gear shift device (Output device)



8、传动、换档机构(输出机构) Transmission and gear shift device (Ontput device)

序 号 Ser.No	件 号 Part No	名 称 Description	数量 Q'ty
18	FG-585000-0	轴承 Bearing	1
19	FG-580851-0	内六角螺套 Internal hexagonal nut	1
20	FG-580303-0	前接头 Front connecting fork	1
21	FG-580401-0	垫圈 Washer	1
22	FG-580852-0	螺母 Nut	1
23	FG-583201-0	后盖 Rear cover	4
24	FG-583601-0	O 形圈 O-ring	1
25	GB5787-86	螺栓 M8×25 Bolt M8×25	1
26	FG-500305-0	倒档拨叉 Reverse shift fork	1
27	FG-500703-0	压簧 Compression spring	1
28	GB308-89	钢球 6.35G100b Steel ball 6.35G100b	1
29	FG-500006-0	倒档拨叉轴 Reverse shift fork shaft	1
30	FG-504000-0	倒档控制杆组合 Reverse control lever unit	1
31	FG-500007-0	倒档操纵轴 Reversr control shaft	1
32	GB894.1-86	挡圈 14 Circlip 14	1
33	FG-500403-0	操纵板 Operation plate	1
34	FG-590404-0	杠杆板 Lever plate	1
35	GB5789-86	螺栓 M6×16 Bolt M6×16	1
36	FG-505000-0	油封 Oil seal	1
37	FG-500601-0	O 形圈 O-ring	1
38	FG-580304-0	后接头 Rear joint	1
39	FG-580305-0	传动叉 Driving fork	1
40	FG-586000-0	滚针轴承 Rolling bearing	4
41	FG-580402-0	卡圈 Clip	4

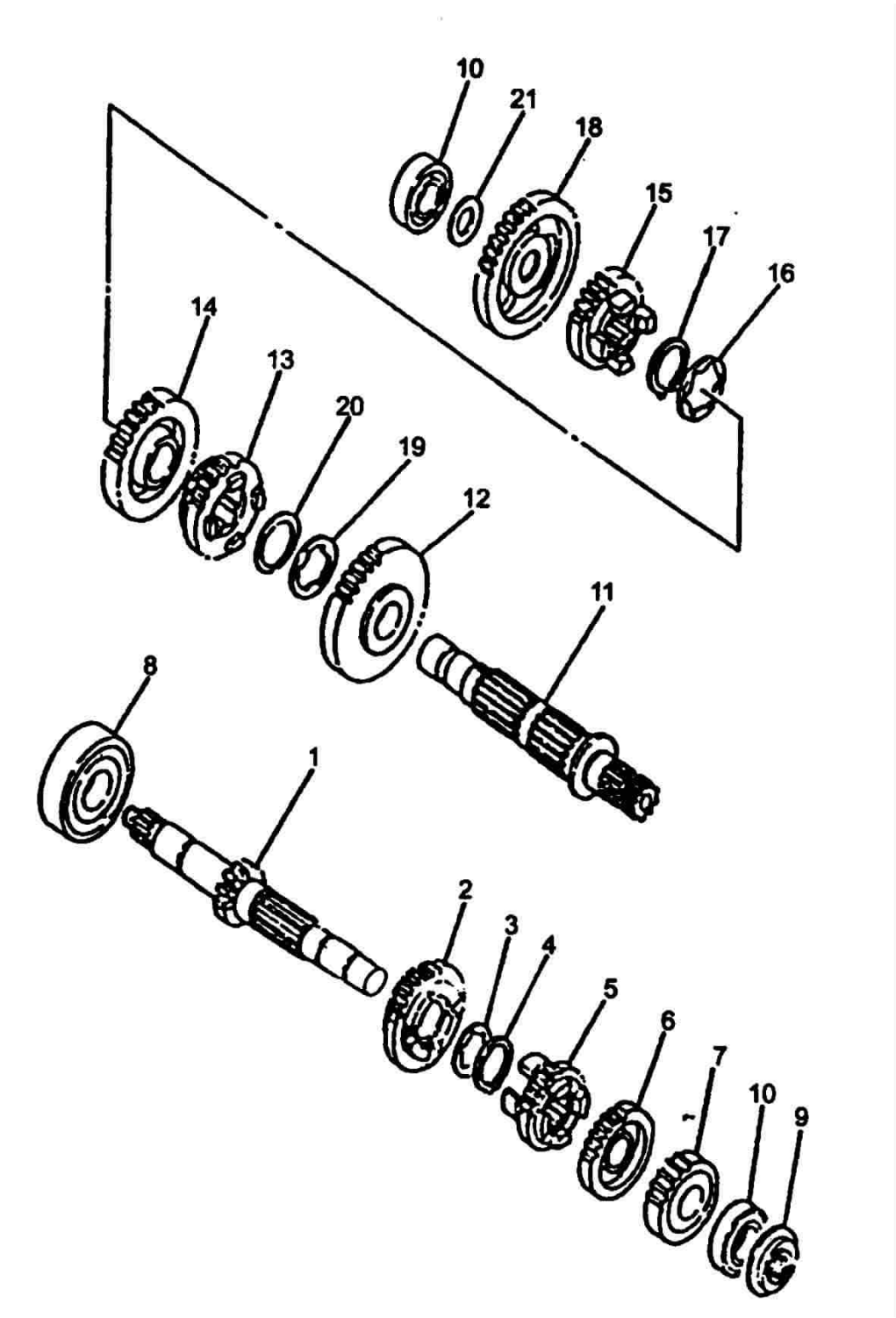
8、传动、换档机构(输出机构) Transmission and gear shift device (Output device)



9、传动、换档机构(变速齿轮机构) Transmission, shift device (Change speed gear device)

序 号 Ser.No	件 号 Part No	名 称 Description	数量 Q'ty
1	FG-511000-0	主轴轴合 Spindle unit	1
2	FG-510304-0	五档主动齿轮 Shift 5 driving gear	1
3	FG-510401-0	花键垫片 Spline pad	1
4	FG-510402-0	弹性挡圈 Circlip	1
5	FG-510302-0	三档主动齿轮 Shift 3 driving gear	1
6	FG-510303-0	四档主动齿轮 Shift 4 driving gear	1
7	FG-510301-0	二档主动齿轮 Shift 2 driving gear	1
8	GB/T 276-1994	轴承 6204 Bearing 6204	1
9	FG-501000-0	油封 Oil seal	1
10	GB/T 276-94	轴承 6202 Bearing 6202	2
11	FG-521000-0	驱动轴组合 Drive axle unit	1
12	FG-520301-0	二档从动齿轮 Shift 2 driven gear	1
13	FG-520303-0	四档从动齿轮 Shift 4 driven gear	1
14	FG-520302-0	三档从动齿轮 Shift 3 driven gear	1
15	FG-520304-0	五档从动齿轮 Shift 5 driven gear	1
16	FG-520402-0	内花键垫圈 Inner spline washer	1
17	FG-520401-0	弹性挡圈 Circlip	1
18	FG-522000-0	一档从动齿轮组合 Shift 1 driven gear unit	1
19	FG-520403-0	内花键垫圈 Inner spline washer	1
20	GB894.1-86	弹性挡圈 26 Circlip 26	1
21	FG-520404-0	垫圈 Washer	1

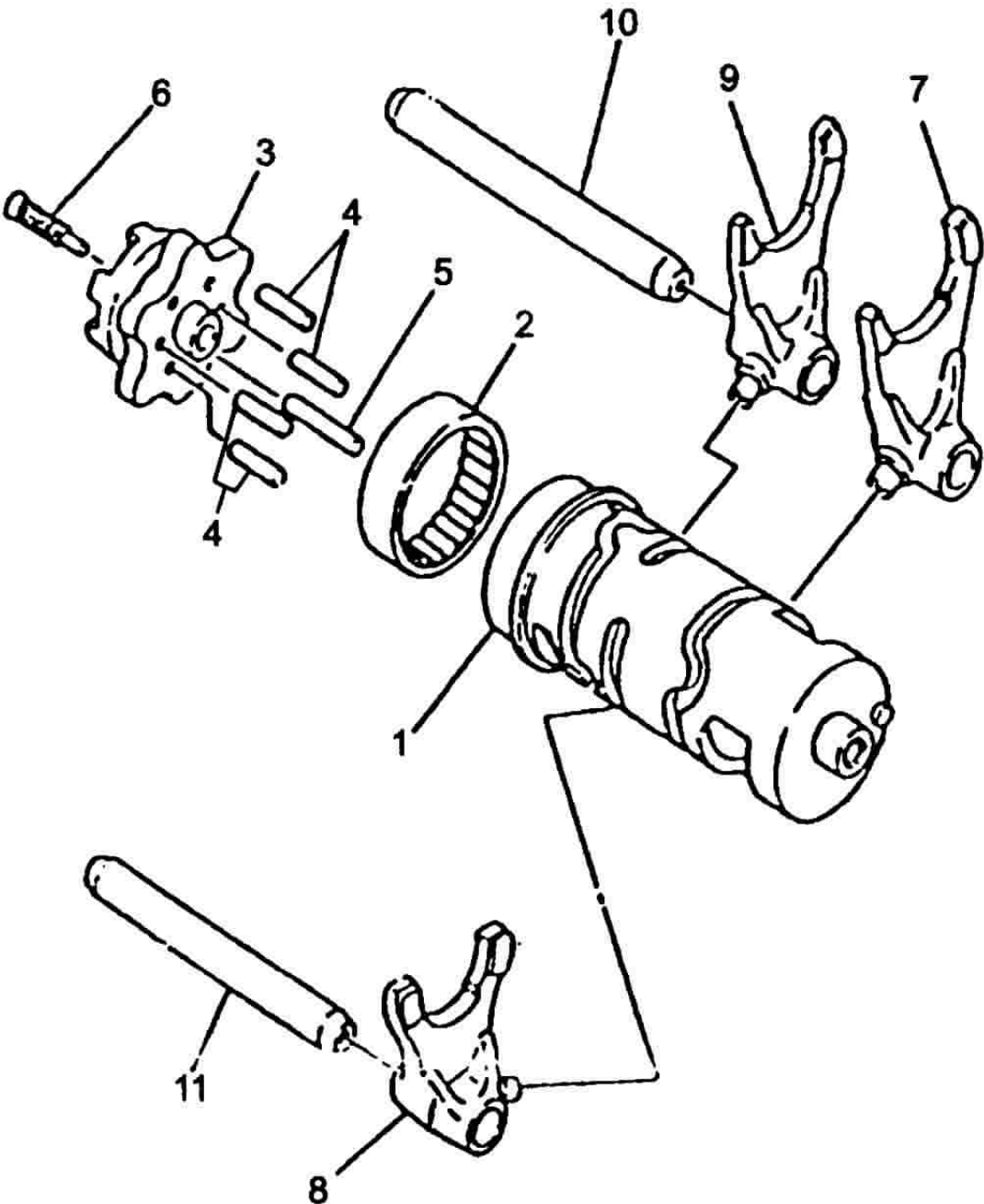
9、传动、换档机构(变速齿轮机构) Transmission, shift device (Change speed gear device)



10、传动、换档机构(换档凸轮、拨叉机构) Transmission, shift device (Shift cam, shift fork device)

[illegible]

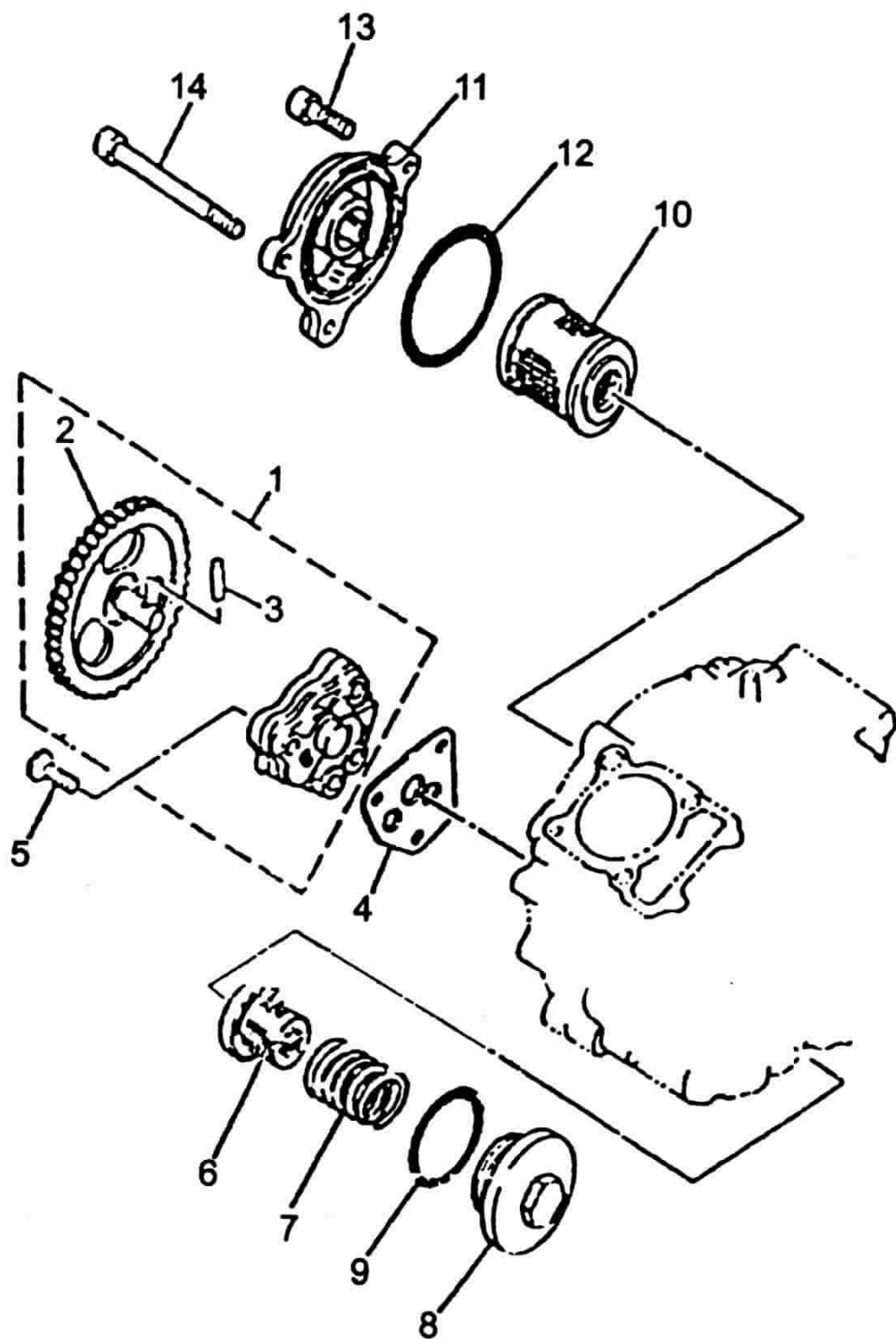
10、传动、换档机构(换档凸轮、拨叉机构)) Transmission, shift device (Shift cam, shift fork device)



11、润滑系统 Lubrication system

[illegible]

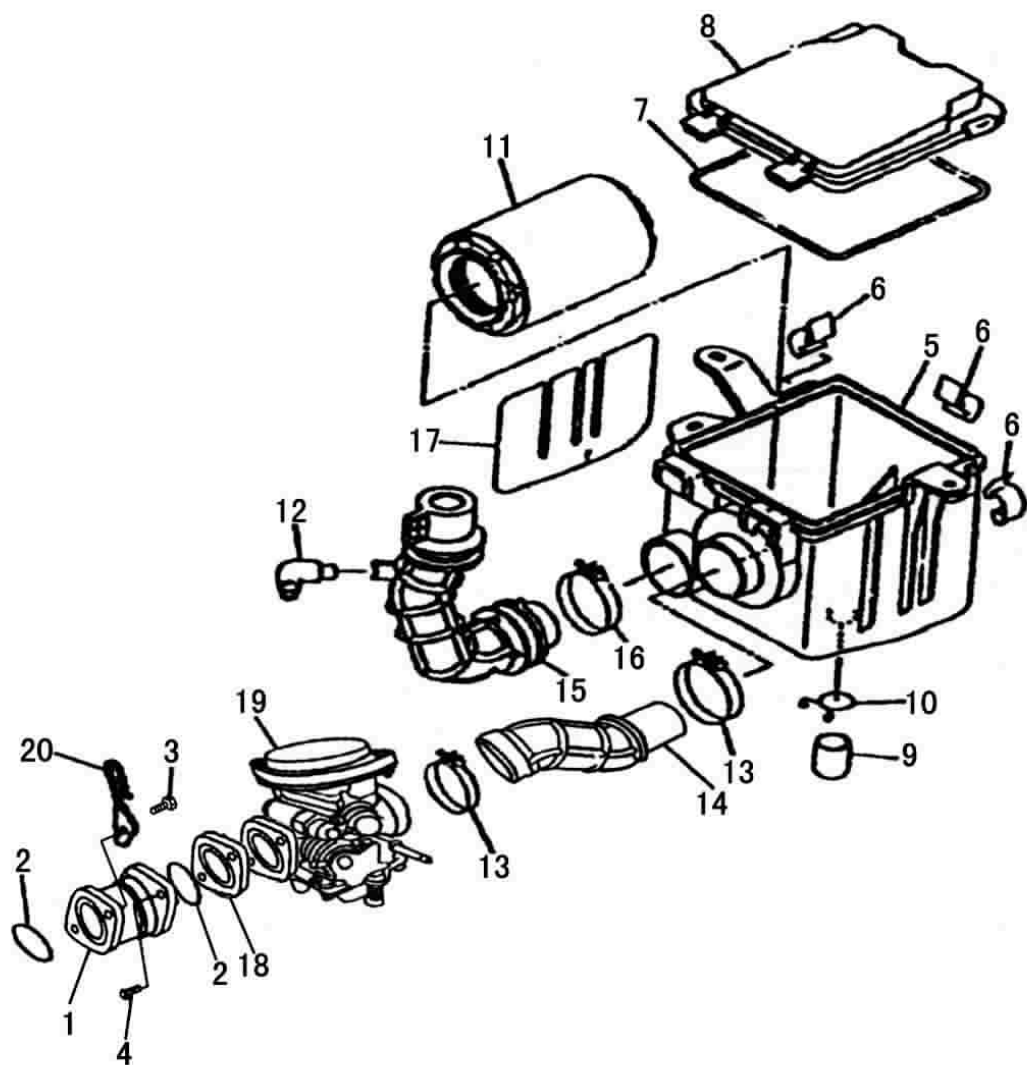
11、润滑系统 Lubrication system



12、进排气系统(进气系统) Intake & exhaust system(Intake system)

序 号 Ser.No	件 号 Part No	名 称 Description	数量 Q'ty
1	FG-700201-0	化油器座 Carburetor seat	1
2	FG-700603-0	O 形圈 O-ring	2
3	GB5782-86	螺钉 M6×16 Screw M6×16	2
4	GB70-85	螺钉 M6×16-10.9 Screw M6×16-10.9	2
5	FG-710503-0	空滤器体 Air filter body	1
6	FG-710401-0	空滤器盖锁片 Locking plate of air filter cover	3
7	FG-710603-0	密封圈 Seal ring	1
8	FG-710502-0	空滤器盖 Air filter cover	1
9	FG-710504-0	集尘杯 Dust cup	1
10	FG-710701-0	钢丝夹 Steel wire clamp	1
11	FG-711000-0	滤芯组合 Filter core unit	1
12	FG-710501-0	进气管弯头 Intak pipe bend	1
13	FG-712000-0	管夹组合 Pipe clamp unit	2
14	FG-710602-0	化油器连接管 Connecting pipe of carburetor	1
15	FG-710601-0	进气管 Intake pipe	1
16	FG-712000-0	进气管管夹组合 Intake pipe clamp unit	1
17	FG-710801-0	隔热垫 Thermal pad	1
18	FG-700502-0	衬垫 Pad	1
19	FG-720000-0	化油器 Carburetor	1
20	FG-704000-0	挂钩组合 Cable clip unit	1

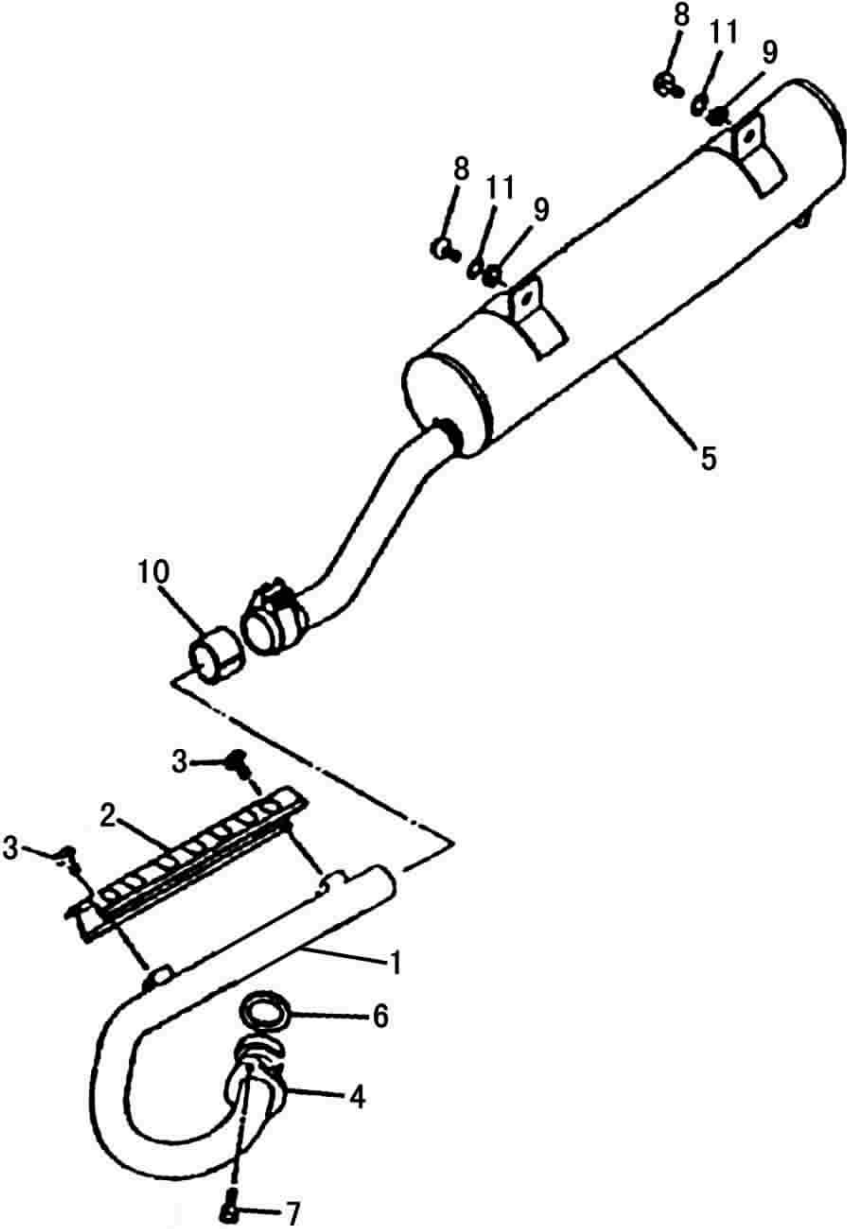
12、进排气系统(进气系统) Intake & exhaust system(Intake system)



13、进排气系统(排气系统) Intake & exhaust system(Exhaust system)

[illegible]

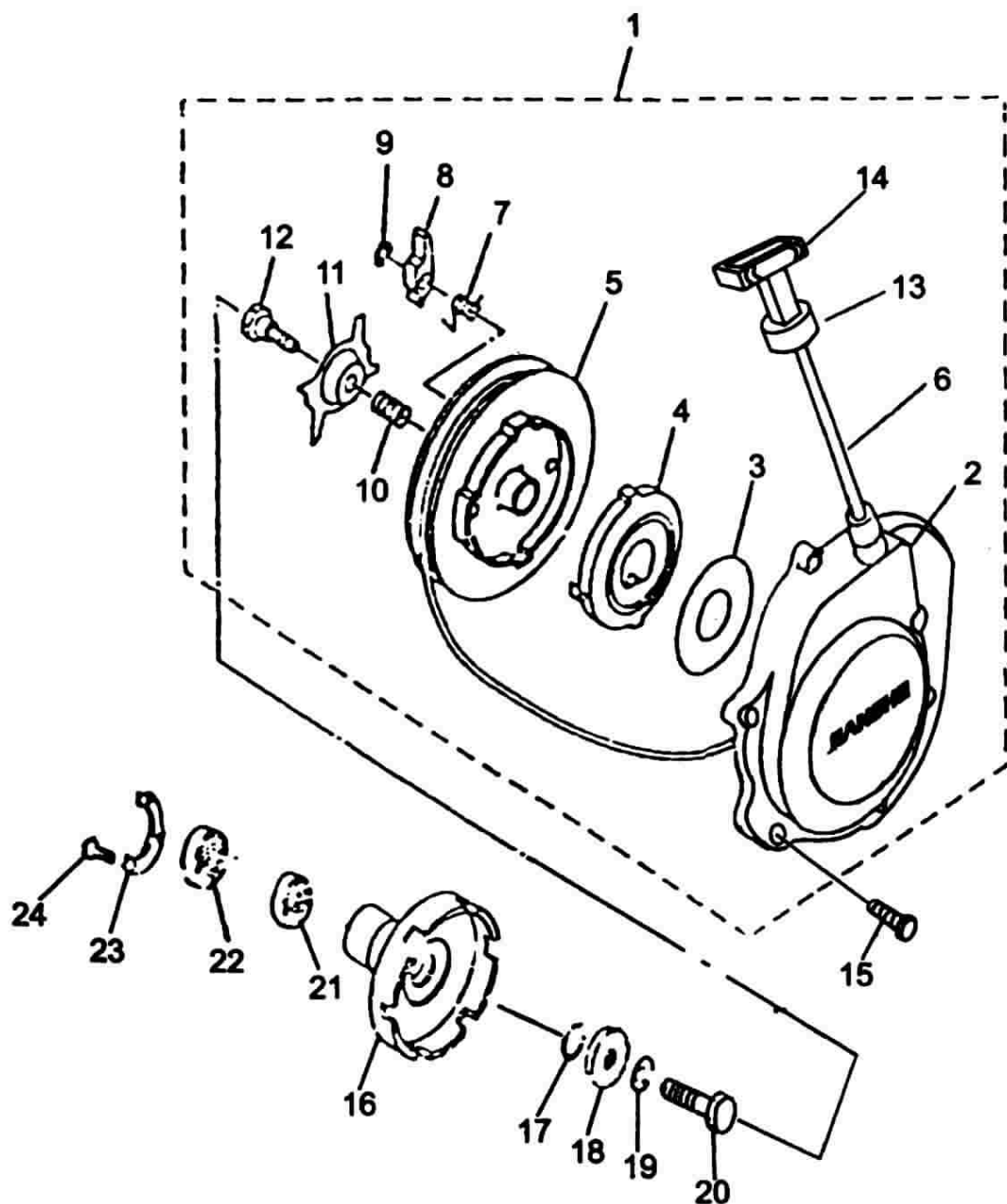
13、进排气系统(排气系统) Intake & exhaust system(Exhaust system)



14、起动系统(手起动) Starting system (Hand starting)

序 号 Ser.No	件 号 Part No	名 称	Description	数量 Q'ty
1	FG-870000-0	手操起动机构	Hand starting device	1
2	FG-872000-0	左侧盖组合	Left side cover unit	1
3	FG-870801-0	垫片	Shim	1
4	FG-873000-0	卷簧底板组合	Bottom board unit of winding spring	1
5	FG-871000-0	驱动盘组合	Drive plate unit	1
6	FG-870802-0	拉线	Tension line	1
7	FG-870702-0	扭簧	Torsion spring	2
8	FG-870851-0	驱动爪	Drive paw	2
9	GB896-86	挡圈 6	Circlip 6	2
10	FG-870701-0	压簧	Compressing spring	1
11	FG-870401-0	导向板	Guide board	1
12	FG-870001-0	螺钉销	Screw pin	1
13	FG-870601-0	起动手柄	Starting lever	1
14	FG-870402-0	起动手柄盖	Screw lever cover	1
15	Q/JR YP81-93	螺钉 98512-06020	Screw 98512-06020	6
16	FG-807000-0	起动棘轮组合	Boss one-way unit	1
17	FG-800601-0	O 形圈	O-ring	1
18	FG-800404-0	垫圈	Washer	1
19	GB93-87	垫圈 10	Washr 10	1
20	GB5785-85	螺栓 M10×1.25×40	Brlt M10×1.25×40	1
21	FG-806000-0	油封	Oil seal	1
22	FG-584000-0	轴承	Bearing	1
23	FG-800403-0	压板	Pressing plate	1
24	GB819-85	螺钉 M5×16	Screw M5×16	3

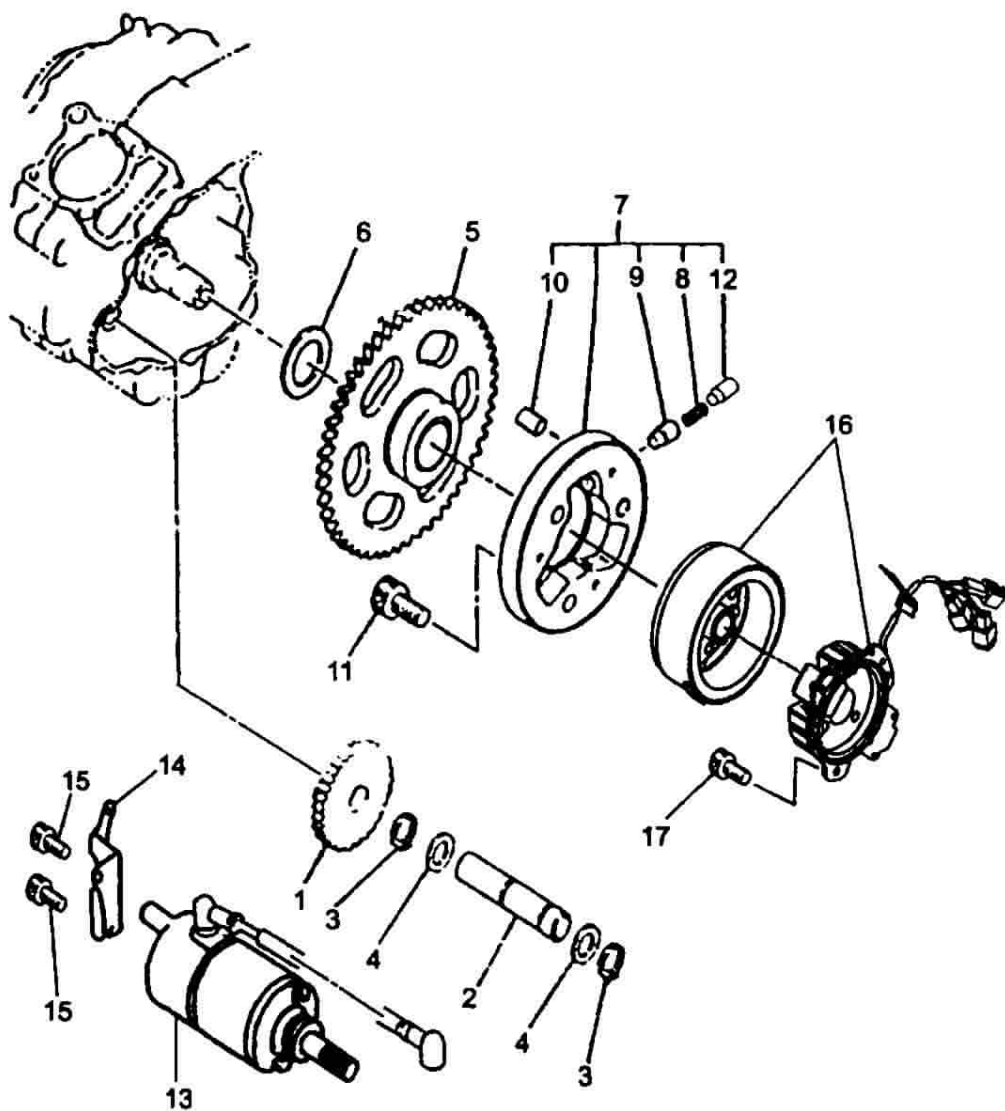
14、起动系统(手起动) Starting system (Hand starting)



15、起动系统(电起动) Starting system (Electric starter)

[illegible]

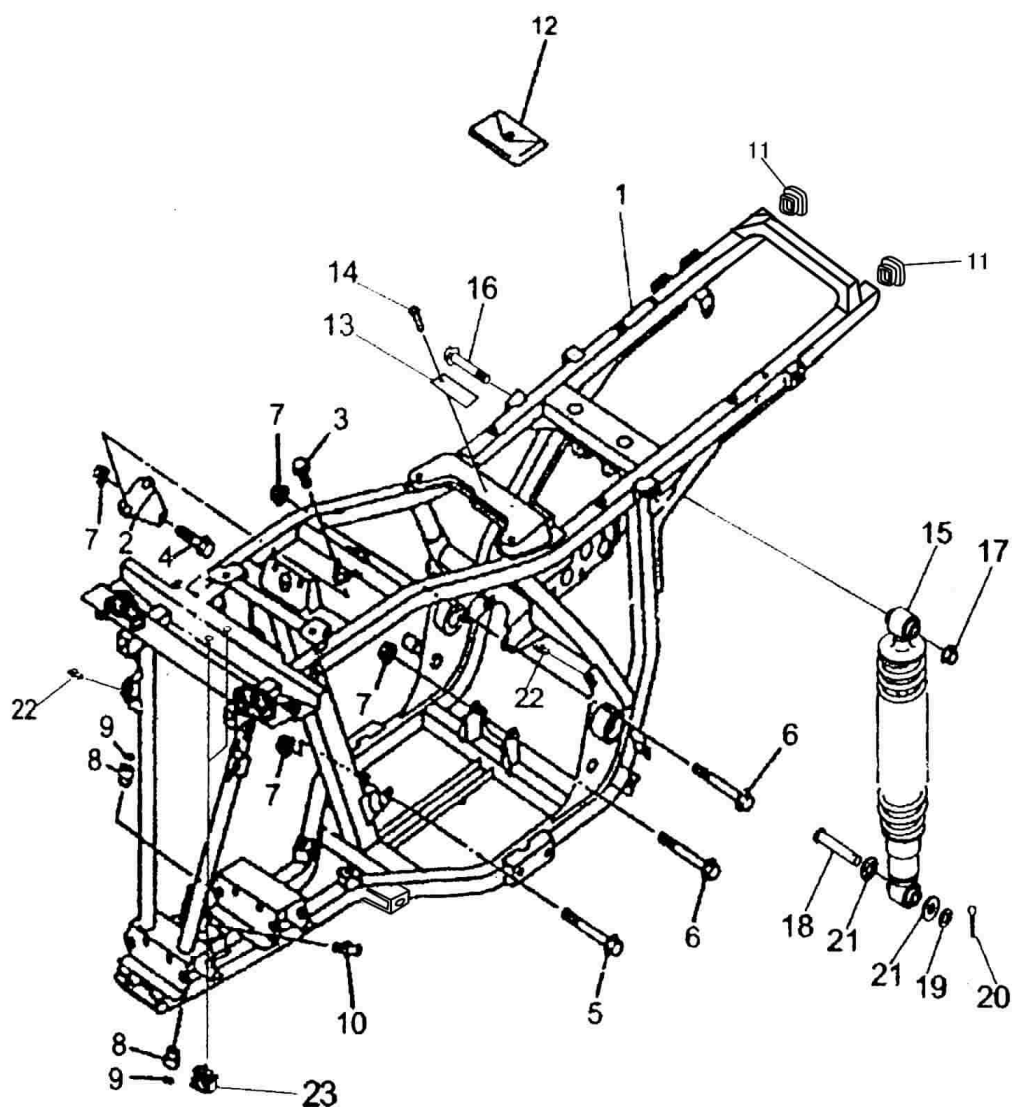
15、起动系统(电起动) Starting system (Electric starter)



16、车架、后减震器 Frame, rear shock absorber

序 号 Ser.No	件 号 Part No	名 称 Description	数量 Q'ty
1	SSM3-100000-0	车架 Frame	1
2	SSA0-004000-0	发动机上连接板组 Connection plate combination on engine	1
3	GB5787-86	螺栓 M8×16 Bolt M8×16	2
4	GB5787-86	螺栓 M8×55 Bolt M8×55	1
5	GB5787-86	螺栓 M8×65 Bolt M8×65	1
6	GB5787-86	螺栓 M8×105 Bolt M8×105	2
7	GB6187-86	螺母 M8 Nut m8	4
8	SSA0-008701-0	轴承 Bearing	2
9	GB3452.1-92	O 形密封圈 15×2.65G O-ring 15×2.65G	2
10	JB/T7940.1-93	油杯 M6 Oil cup M6	1
11	SSA0-000508-0	车架塑料塞 Plastic plug of frame	2
12	SSA9-000000-0	随车工具 Tool kit	1
13	SSA0-000409-0	标牌 Label	1
14	GB12618-90	抽芯铆钉 3.2×7 Core-drawing rivet3.2×7	2
15	SSA3-530000-0	后减震器 Rear shock absorber	1
16	GB5787-86	螺栓 M12×75 Bolt M12×75	1
17	GB6187-86	螺母 M12 Nut M12	1
18	SSA0-000010-0	后减震销轴 Rear shock absorber pin	1
19	GB97.1-85	垫圈 12 Washer 12	1
20	GB91-86	开口销 3.2×24 Split pin 3.2×24	1
21	SSA0-011000-0	后减震胶垫组合 Rear shock absorbing rubber pad unit	2
22	SSA0-000512-0	线夹 4 Cable clip 3	3
23	SSA0-000510-0	线夹 2 Cable clip 2	1
24	SSA0-000513-0	线夹 5 Cable clip 5	1

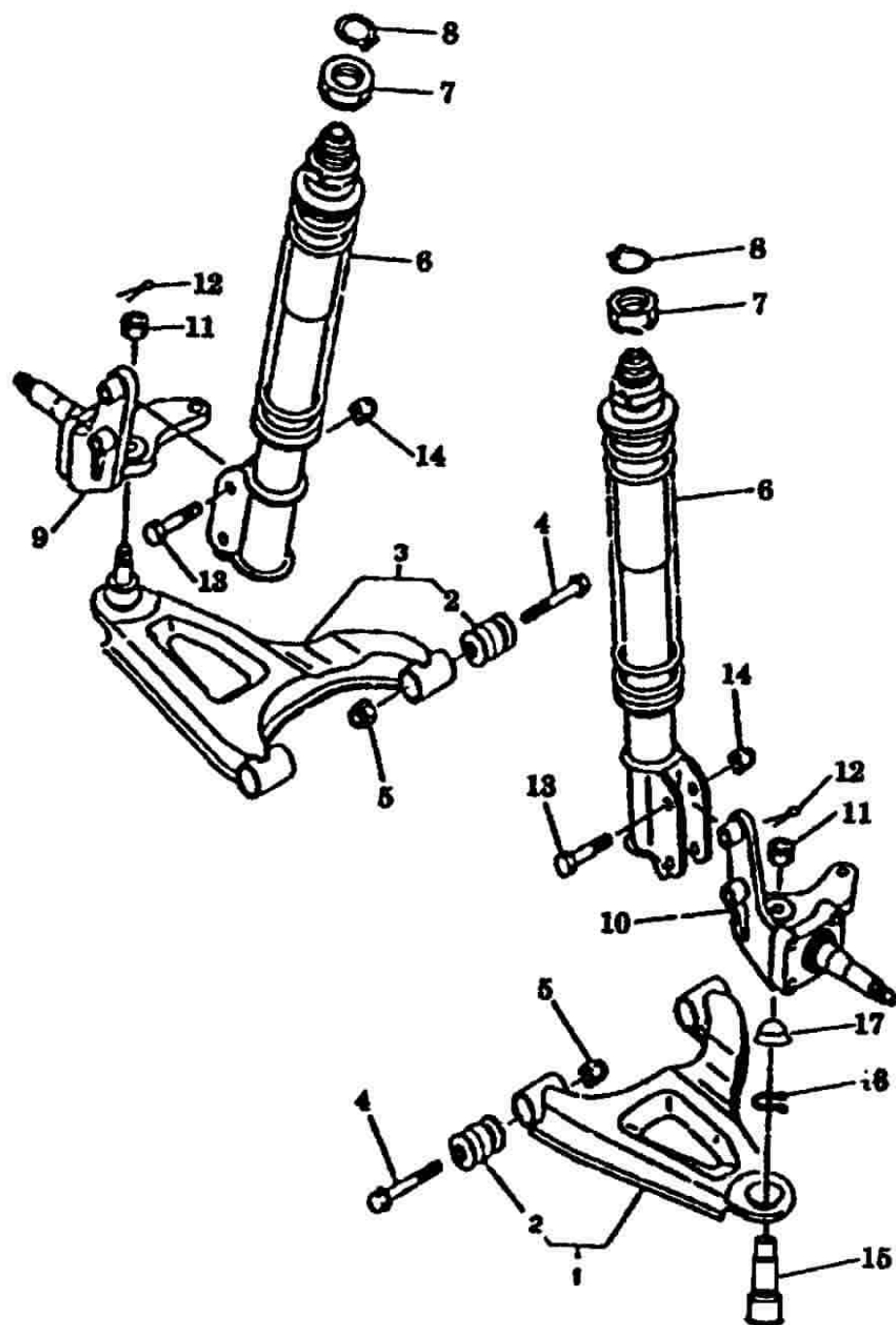
16、车架、后减震器 Frame, rear shock absorber



17、前悬挂系统 Front suspension system

[illegible]

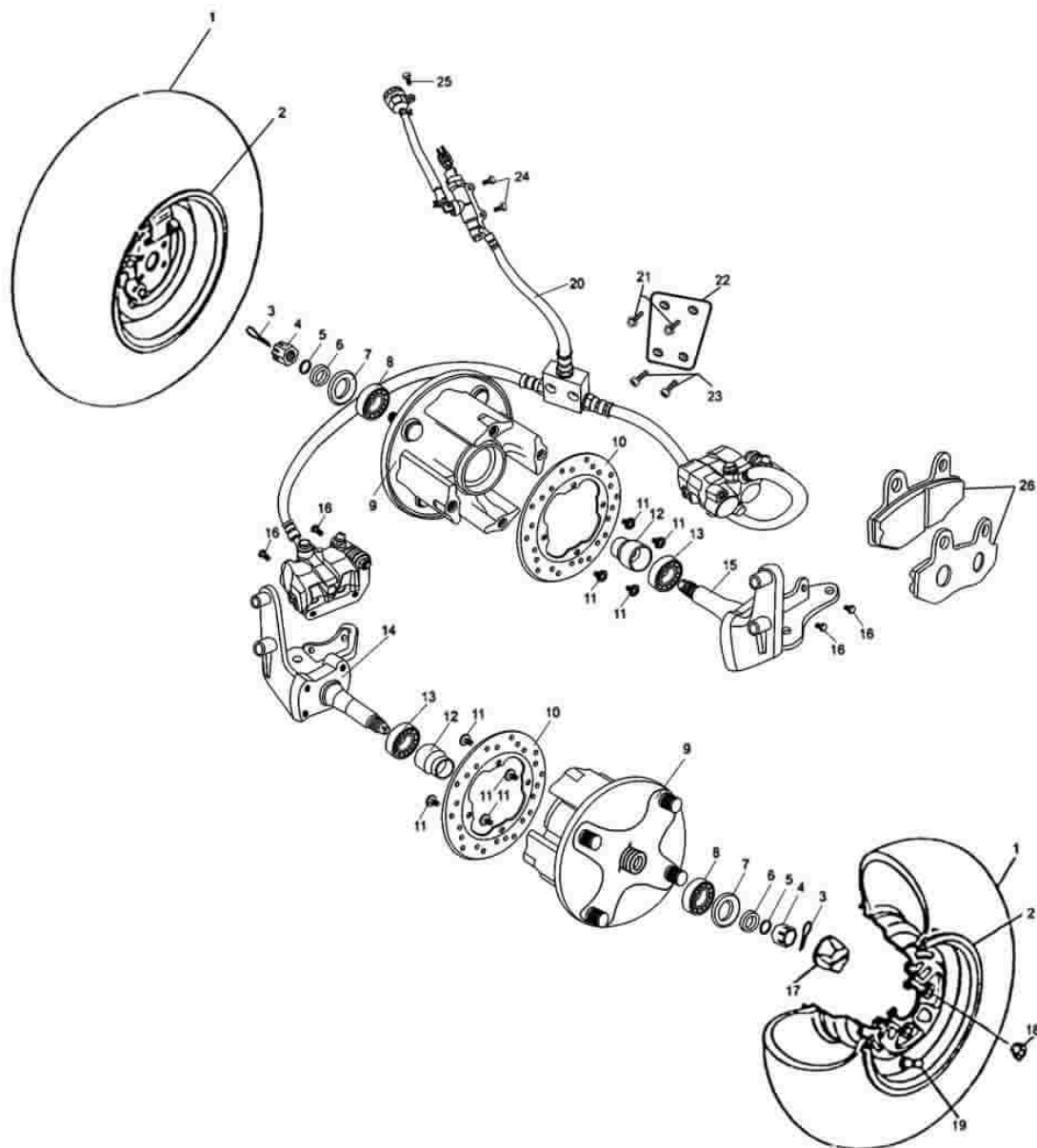
17、前悬挂系统 Front suspension system



18、前轮及前制动系统 Front wheel and front brake system

序 号 Ser.No	件 号 Part No	名 称 Description	数量 Q'ty
1	SSA3-810601-0	前轮胎(左,右) Front tire (left/right)	1
2	SSA3-811000-0	前轮辋(左,右) Front rim (left/right)	1
3	GB91-86	开口销 3.2×26 Cotter pin 3.2×26	2
4	GB6181-93	螺母 M14 Nut M14	2
5	GB3452.1-93	O 型圈 17×1.8G O-ring 17×1.8G	2
6	SSA4-310002-0	衬圈 Bushing	2
7	SSA4-317000-0	油封 Oil seal	2
8	GB/T276-94	轴承 6203 Bearing 6203	2
9	SSB4-312000-0	前制动基座组合 Base seat assy of ront brake	2
10	SSB4-311401-0	制动盘 Brake disc	2
11	SSB4-310001-0	制动盘安装螺钉 Installing screwe of brake disc	8
12	SSA4-310702-0	衬管 Sleeve	2
13	GB/T276-94	轴承 6005-RS Bearing 6005-RS	2
14	SSB4-314000-0	左安装座 Left installing seat	1
15	SSB4-313000-0	右安装座 Right installing seat	1
16	GB5787-86	螺栓 M8×12 Bolt M8×12	4
17	SSA0-000604-0	前后轮防尘盖 Dust-proof cover of front and rear wheels	2
18	SSA0-000301-0	前后轮联接螺母 Connecting nut of front and rear wheels	8
19	GB12836.1-1999	无内胎气门嘴 Z2-01-1 Tubeless valve mouth Z2-01-1	2
20	SSA4-311000-2	前液压制动器总成 Front hudraulic brake	1
21	GB5787	螺栓 M5×16 Bolt M5×16	1
22	SSB0-001000-0	分液阀安装板组合 Liquid distribution valve installing plate assy of	1
23	GB70-85	螺栓 M6×25 Bolt M6×25	2
24	GB5787-86	螺栓 M6×16 Bolt M6×16	2
25	GB5787-86	螺栓 M6×12 Bolt M6×12	1
26	SSB4-320000-0	摩擦衬片组合 Friotion lining assy	4

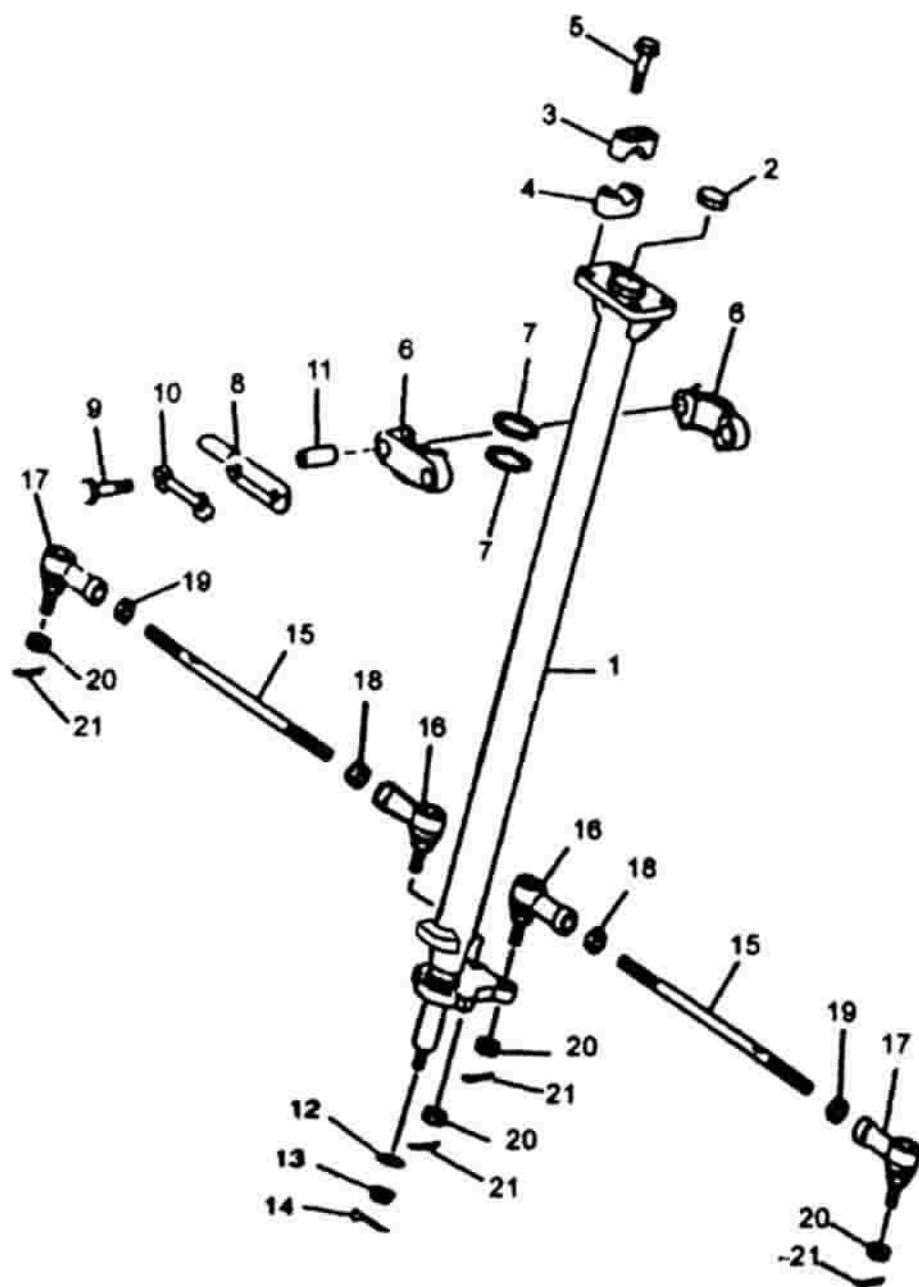
18、前轮及前制动系统 Front wheel and front brake system



19、转向立柱 Steering vertical pole

序 号 Ser.No	件 号 Part No	名 称	Description	数量 Q'ty
1	SSA4-601000-2	转向立柱焊接	Steering upright column weld	1
2	SSA4-601501-0	防尘盖	Dust-proof cover	1
3	SSA4-600202-0	方向把上夹持器	Upper gripper block of steering bar	2
4	SSA4-600201-0	方向把下夹持器	Lower grip slipper of steering bar	1
5	GB5787-86	螺栓 M8×50	Bolt M8×50	4
6	SSA0-000507-0	转向立柱夹持座	Grip slipper of steering upight column	2
7	SSA0-000607-0	密封圈	Sealing ring	2
8	SSA0-012000-0	线夹组合	Wire clip unit	1
9	GB5782-86	螺栓 M8×60	Bolt M8×60	2
10	SSA0-000407-0	锁紧垫片	Locking shim	1
11	SSA0-000011-0	衬套	Bushing	2
12	GB97.1-85	垫圈 10	Washer 10	1
13	GB6178-86	螺母 M10	Nut M10	1
14	GB91-86	开口销 2.5×24	Cotter pin 2.5×24	1
15	SSA4-602001-0	拉杆	Tension rod	2
16	SSA4-604000-0	转向拉杆球销总成 1	Steering tension rod ballpin assy 1	2
17	SSA4-605000-0	转向拉杆球销总成 2	Steering tension rod ballpin assy 2	2
18	GB6176-86	螺母 M12×1.25	Nut M12×1.25	2
19	SSA4-602002-0	螺母 M12×1.25(左)	Nut M12×1.25(Left)	2
20	GB6181-86	螺母 M12×1.25	Nut M12×1.25	4
21	GB91-86	开口销 3.2×24	Cotter pin 3.2×24	4

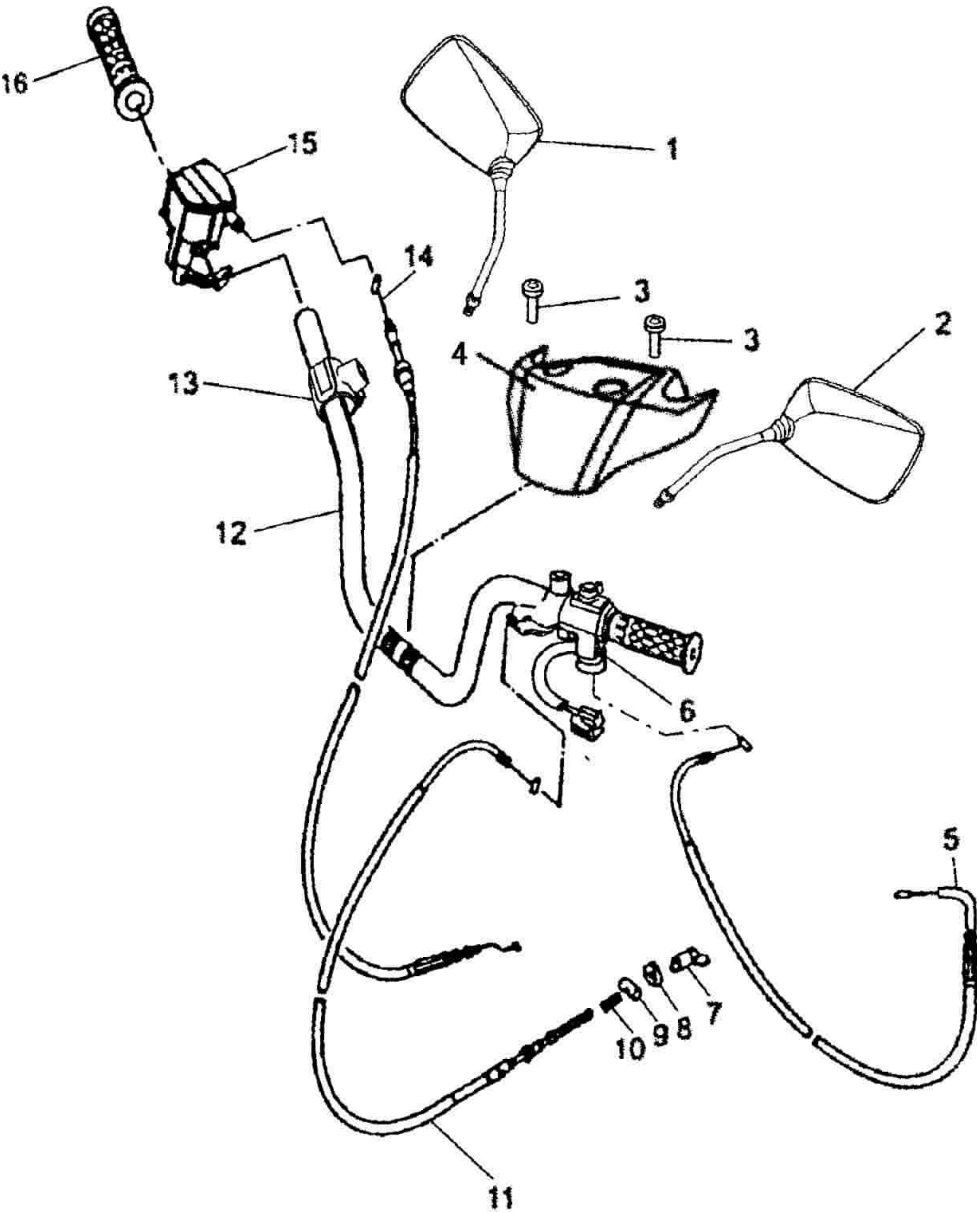
19、转向立柱 Steering vertical pole



20、方向把操纵系统 Steering bar operatioin system

[illegible]

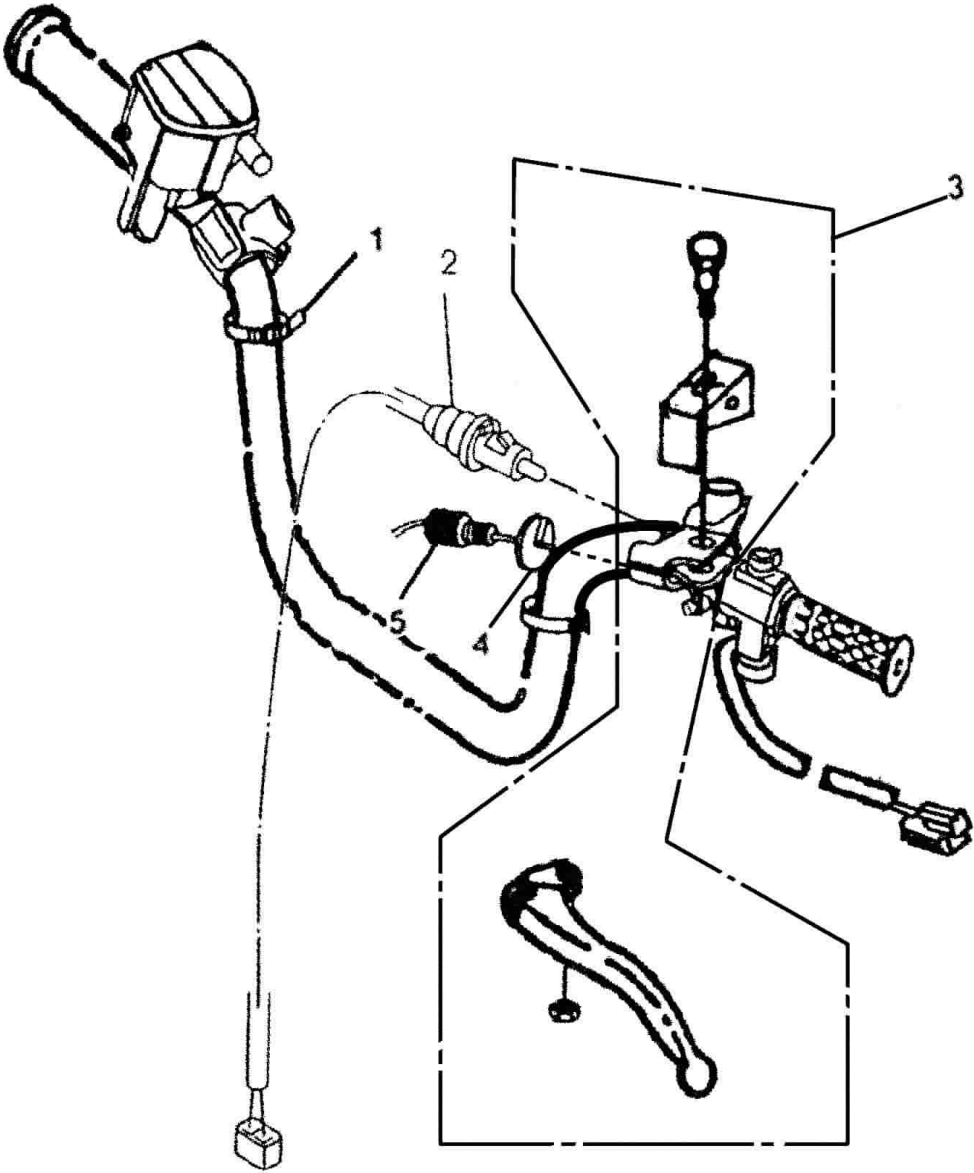
20、方向把操纵系统 Steering bar operation system



21、操纵手柄 Operation handle bar

[illegible]

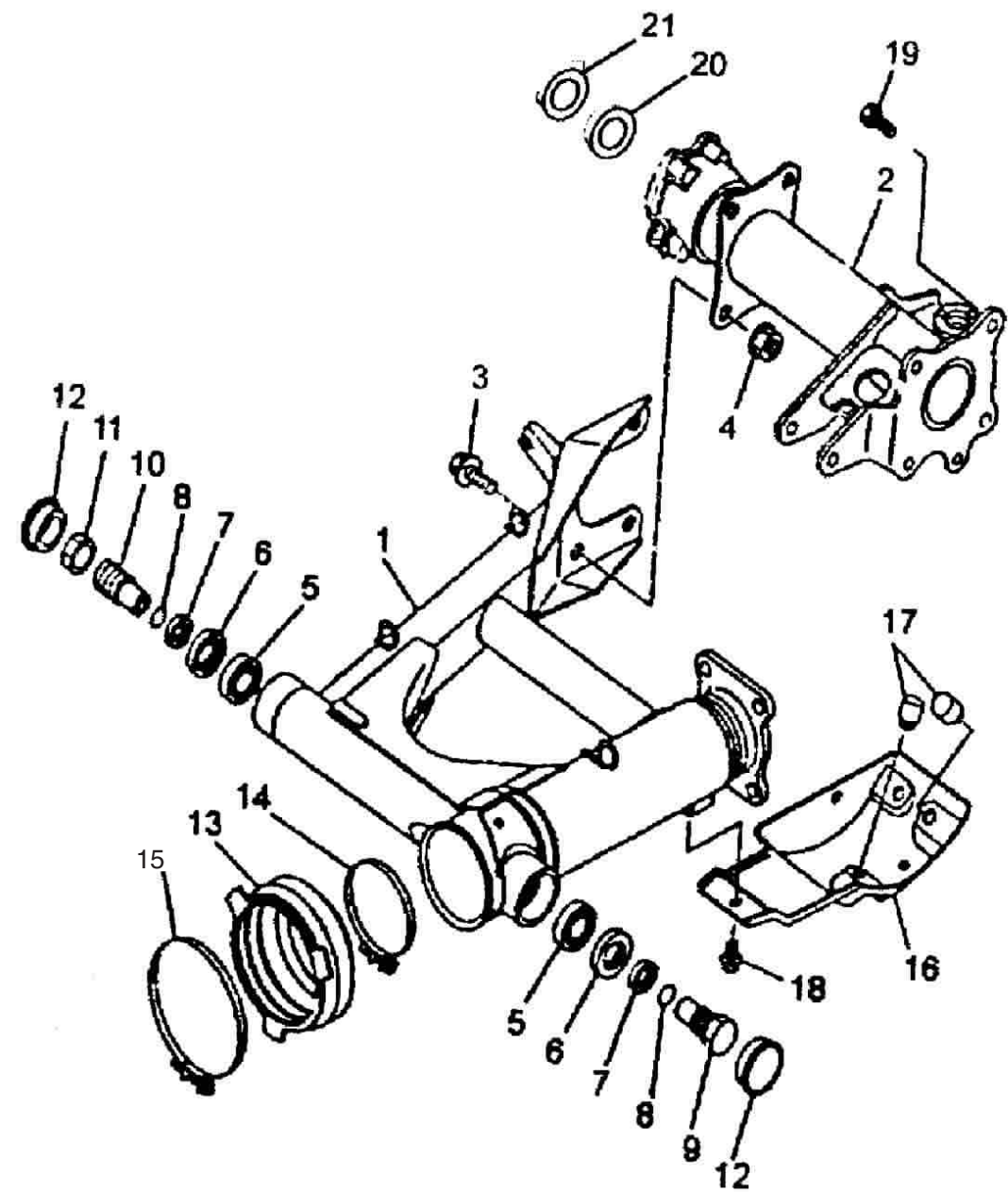
21、操纵手柄 Operation handle bar



22、后轮叉组合 Rear wheel fork unit

序 号 Ser.No	件 号 Part No	名 称 Description	数量 Q'ty
1	SSA3-611000-0	后轮叉组合 Rear wheel fork unit	1
2	SSA3-612000-0	后轮轴套筒 Rear wheel axle sleeve	1
3	Q/JR YP33-92	螺栓 M12×1.25×25 Bolt M12×1.25×25	4
4	Q/JR YP34-92	螺母 M12×1.25 Nut M12×25	4
5	GB/T 297-94	轴承 30203 Bearing 30203	2
6	SSA3-614000-0	油封 Oil seal	2
7	SSA3-610001-0	轴套 Collar	2
8	JB/T 6659-93	O 型圈 1.22×17 O-ring 1.22×17	2
9	SSA0-000006-0	后臂联接螺栓(左) Rear arm connection bolt (left)	1
10	SSA0-000005-0	后臂联接螺母(右) Rear arm connection nut (right)	1
11	SSA0-000007-0	后臂螺母 M22(右) Rear arm nut M22 (right)	1
12	SSA0-000506-0	后臂轴防尘盖 Rear arm dust-proof cover	2
13	SSA0-610601-0	橡胶套筒 Rubber covering pipe	1
14	SSA0-006000-0	传动轴夹箍组合(后) Driving axle clamp unit (rear)	1
15	SSA0-005000-0	传动轴夹箍组合(前) Driving axle clamp unit (front)	1
16	SSA0-000404-0	齿轮箱下盖 Lower cover of gear box	1
17	SSA0-000605-0	齿轮箱下盖缓冲垫 Buffering pad of lower cover of gear box	3
18	GB5787-86	螺栓 M8×12 Bolt M8×12	2
19	Q/JR YP33-92	螺栓 M10×1.25×25 Bolt M10×1.25×25	4
20	SSA3-617000-0	油封 Oil seal	1
21	GB/T 276-94	轴承 6206-2RS Bearing 6206-2RS	1

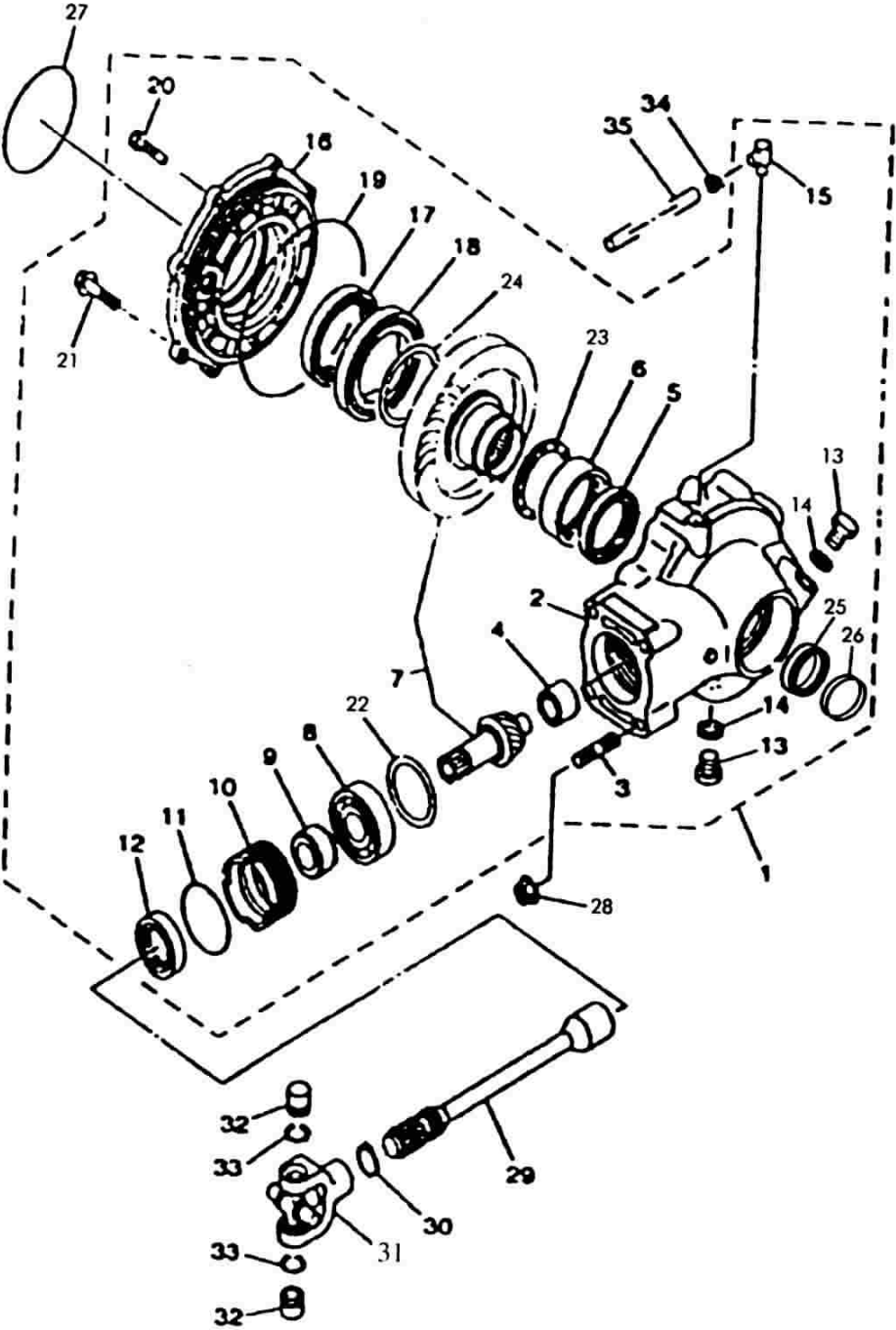
22、后轮叉组合 Rear wheel fork unit



23、后驱动齿轮箱组件 Rear driving gear box unit

序 号 Ser.No	件 号 Part No	名 称 Description	数量 Q'ty
1	SSA3-930000-0	后驱动齿轮箱组件 Rear driving gesar box unit	1
2	SSA3-930201-0	驱动齿轮箱体 Driving gear box body	1
3	SSA3-930001-0	双头螺体 Double-head screw	4
4	SSA3-936000-0	滚针轴承(小) Needle bearing (small)	1
5	SSA3-933000-0	油封 Oil seal	1
6	SSA3-935000-0	滚针轴承(大) Needl bearing (big)	1
7	SSA3-937000-0	锥齿轮付 Tapered gear pair	1
8	GB/T 276-94	轴承 6305 Bearing 6305	1
9	SSA3-930002-0	衬套 Lining	1
10	SSA3-930004-0	轴承衬圈 Bearing race	1
11	SSA3-930601-0	O 形圈 O-ring	1
12	SSA3-932000-0	轴承衬圈油封 Bearing race oil seal	1
13	SSA3-930003-0	螺塞 Screw plug	2
14	ZA1-600401-0	密封垫圈 Gasket	2
15	SSA3-930202-0	通气接头 Air-draingig joint	1
16	SSA3-930203-0	驱动齿轮箱盖 Driving gear box cover	1]
17	SSA3-934000-0	驱动齿轮箱盖油封 Driving gear box cover oil seal	1
18	GB/T 276-94	轴承 16013 Bearing 16013	1
19	Q/JR YP33-85	O 形圈 155×2.65G O-ring 155×2.65G	1
20	GB9074.1-88	螺栓组合件 M8×25 Bolt unit M8×25	6
21	Q/JR YP33-85	螺栓 M10×1.25×45 Bolt M10×1.25×45	2
22	SSA3-930401-0	推动垫片(0.15) Thrust pad (0.15)	1-3
23	SSA3-930402-0	推力平垫(1.6) Thrust flat pad (1.6)	1
24	SSA32-930403-0	环形齿轮垫片(0.4) Ring-shape gear pad (0.4)	1-3
25	GB/T 276-94	轴承 6008-z Bearing 6008-z	1
26	SSA3-931000-0	油封 Oil seal	1
27	GB3452.1-92	O 形圈 85×3.55G O-ring 85×3.55G	1
28	Q/JR YP4-92	螺母 M10×1.25 Nut M10×1.25	4
29	SSA0-000008-0	传动轴 Driving axle	1
30	GB894.2-86	挡圈 21 Circlip 21	1

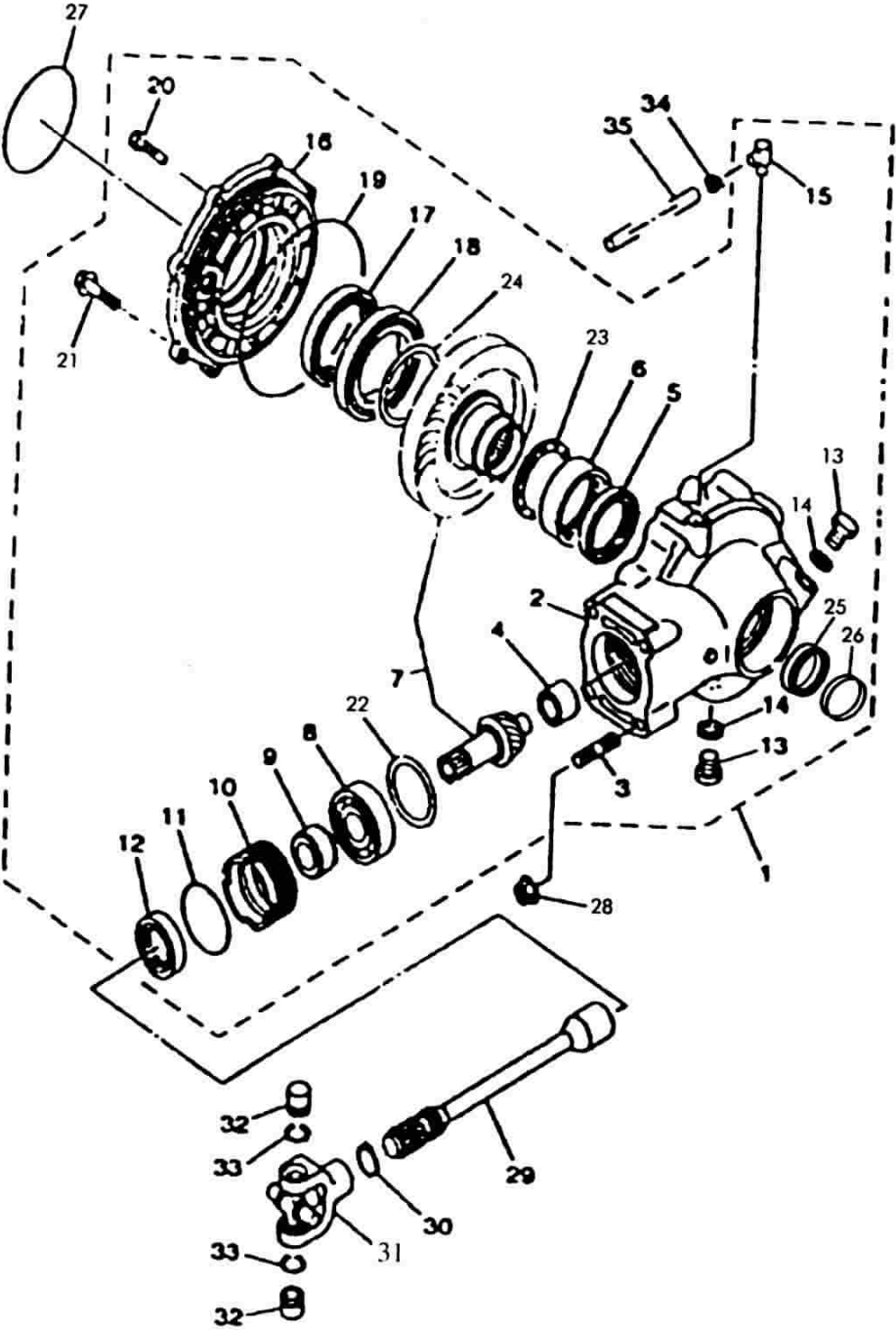
23、后驱动齿轮箱组件 Rear driving gear box unit



23、后驱动齿轮箱组件 Rear driving gear box unit

[illegible]

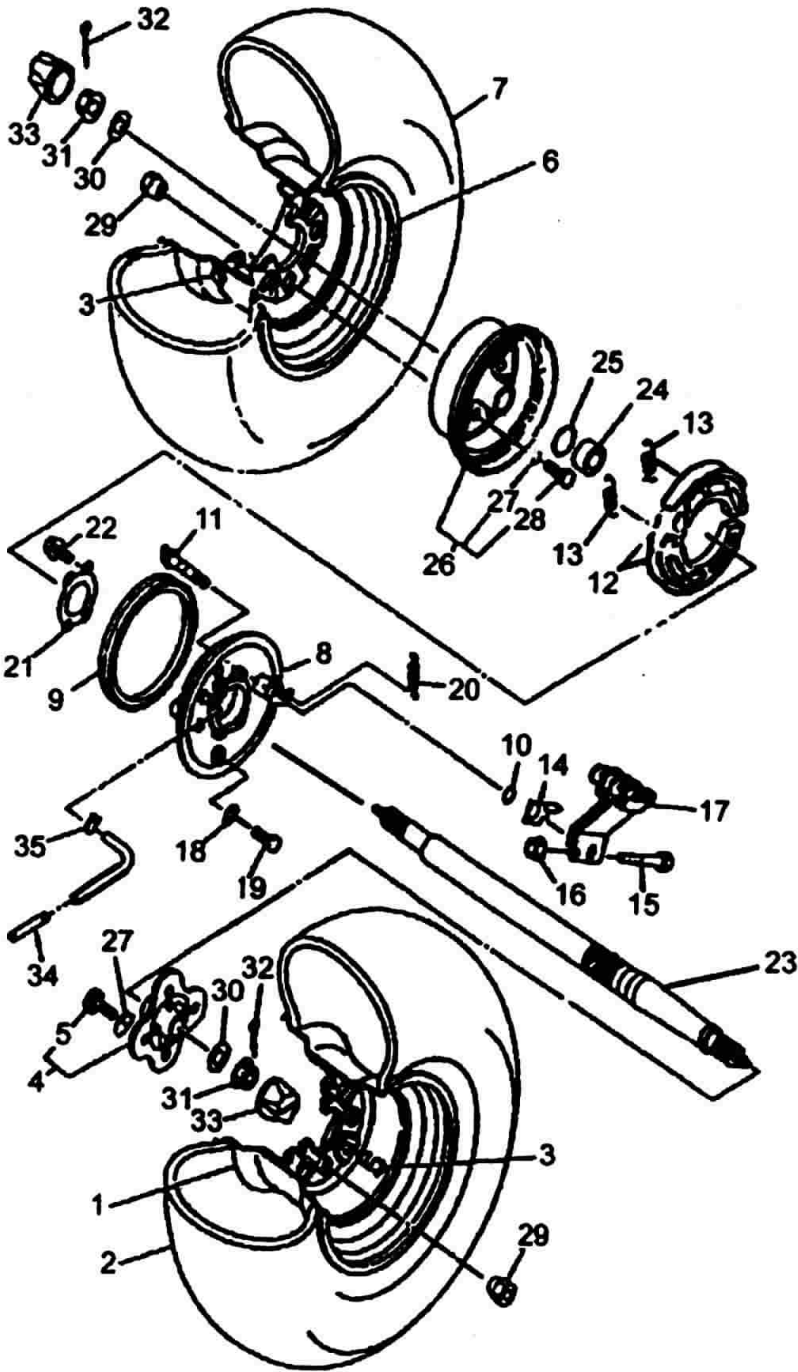
23、后驱动齿轮箱组件 Rear driving gear box unit



24、后轮系统 Rear wheel system

序 号 Ser.No	件 号 Part No	名 称 Description	数量 Q'ty
1	SSA3-821000-0	后轮辋组合(左) Rear rim unit (left)	1
2	SSA3-820601-0	后轮胎(左) Rear tire (left)	1
3	GB12836.1-1999	无内胎气门嘴 z2-01-1 Air drain mouth wthont tyre tbue z2-01-1	2
4	SSA0-017301-0	后轮联接板 Rear wheel connecting plate	1
5	SSA4-312002-0	螺栓 Bolt	4
6	SSA3-821000-0	后轮辋组合 Rear rim unit (right)	1
7	SSA3-820601-0	后轮胎(右) Rear tire (right)	1
8	SSA4-321000-0	后制动盖组合 Rear brake cover unit	1
9	SSA4-314000-0	防尘密封 Dusr-proof seal	1
10	GB3452.1-1992	O 型圈 14×2.65G O-ring 14×2.65G	1
11	SSA4-320001-0	制动蹄块组合 Ram shaft of rear brake	1
12	SSA4-313000-0	后制动凸轮轴 Brake shoe unit	2
13	SSA4-310701-0	拉簧 Tension spring	2
14	SSA4-310404-0	刹车指示片 Brake indicating unit	1
15	CY80·23-13	螺栓 Bolt	1
16	GB6170-86	螺母 M6 Nut M6	1
17	SSA4-322000-0	后制动臂组合 Rear brake arm unit	1
18	SSA4-310402-0	密封垫 Gakset	1
19	GB5783-86	螺栓 M6×12 Botl M6×12	1
20	SSA4-320701-0	制动拉簧 Brake tension spring	1
21	SSA0-000406-0	后制动轴承挡块 Rear brake bearing block	1
22	GB5787-86	螺栓 M8×40 Bolt M8×40	4
23	SSA0-000009-0	后轮轴 Rear wheel axle	1
24	SSA3-000405-0	后制动盖平垫 Flat washer of rear brake cover	1
25	GB3452.1-92	O 型圈 30×1.8G O-ring 30×1.8G	1
26	SSA0-0009301-0	后制动毂 Rear brake hub	1
27	JB/T6659-93	O 型圈 11.8×1.22 O-ring 11.8×1.22	4
28	SSA4-312002-0	螺栓 Bolt	4
29	SSA0-000301-0	前后轮联结螺母 Connecting nut of front and rear wheels	8
30	GB96-85	垫圈 16 Washer 16	2

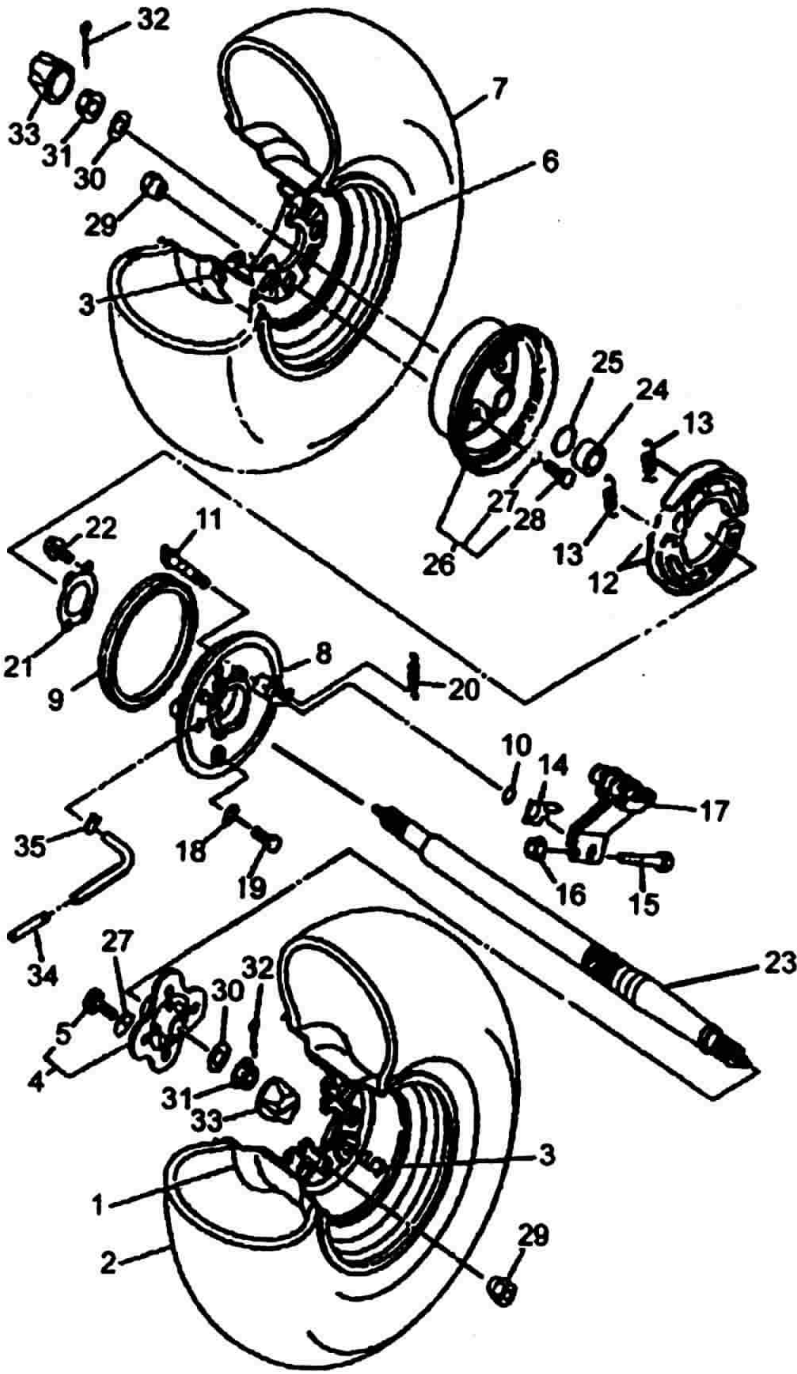
24、后轮系统 Rear wheel system



24、后轮系统 Rear wheel system

[illegible]

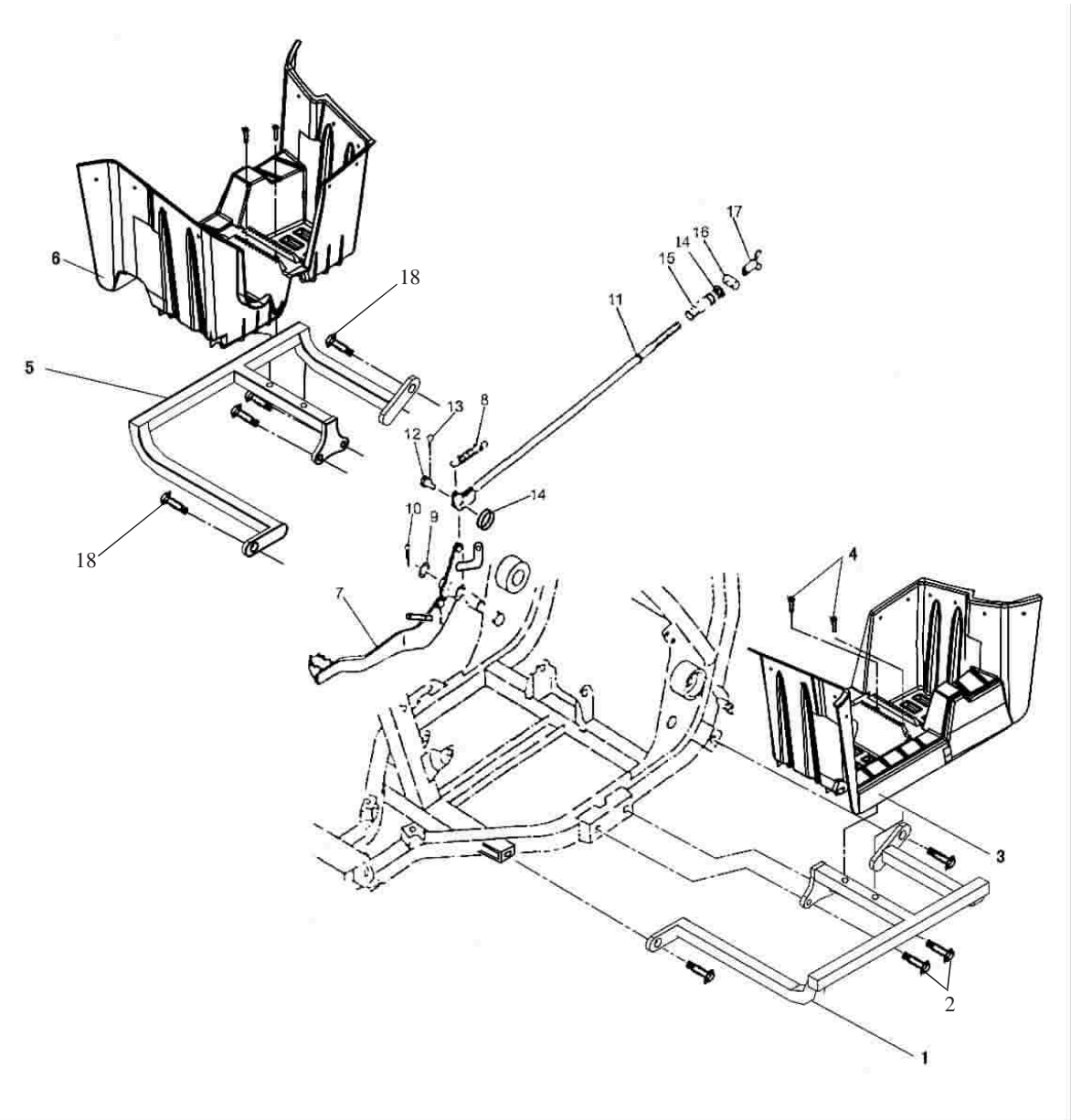
24、后轮系统 Rear wheel system



25、脚踏操纵 Kict starting operation

[illegible]

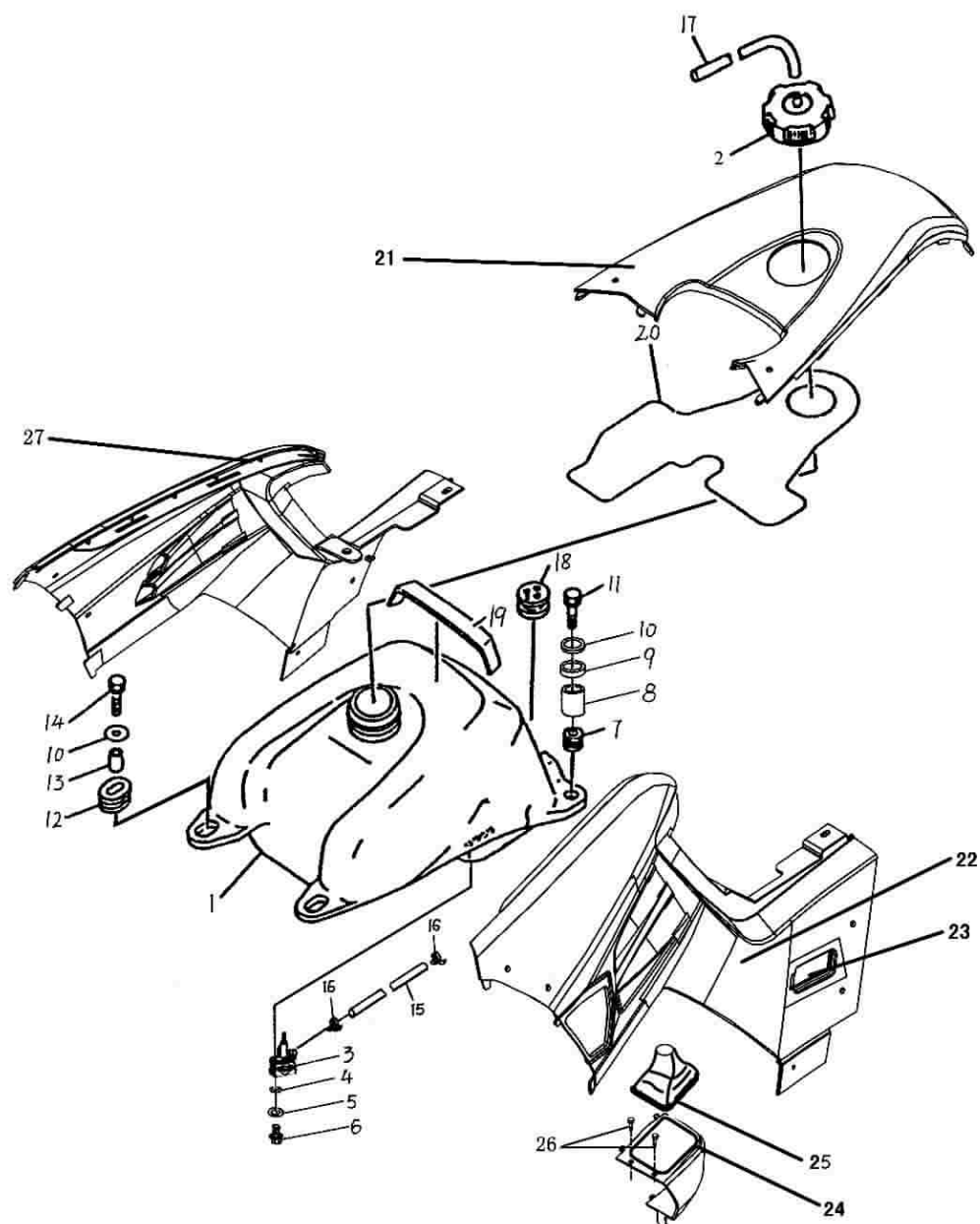
25、脚踏操纵 Kict starting operation



26、油箱、油开关 Fuel tank, Fuel cock

序 号 Ser.No	件 号 Part No	名 称 Description	数量 Q'ty
1	SSA3-312000-0	油箱体 Fuel tank body	1
2	SSA3-311000-0	油箱盖 Fuel tank cover	1
3	SSA3-330000-0	油开关 Fuel cock	1
4	SSA3-310601-0	垫圈 6 Washer 6	2
5	GB97.1-85	垫圈 6-140HV Washer 6-140HV	2
6	GB818-85	螺钉 M6×12 Screw M6×12	2
7	SSA0-000609-0	油箱胶套 2 Rubber bush of fuel tank 2	2
8	SSA0-000003-0	油箱上盖安装衬套 Installing bushing of upper fuel tank cover	2
9	SSA0-000012-0	垫圈 Washer	2
10	SSA0-000403-0	平垫圈 30 Flat washer 30	4
11	GB9074.15-88	螺栓 M6×30 Bolt M6×30	2
12	SSA0-000608-0	油箱胶套 Rubber bush of fuel tank	2
13	SSA0-000002-0	油箱安装衬套 Installing bushing of fuel tank	2
14	GB9074.15-88	螺栓 M6×35 Bolt M6×35	2
15	FG-700602-0	进油管 Fuel intake pipe	1
16	FG-700701-0	钢丝夹 Steel wire clasp-	2
17	HG6-408-79	胶管 5270-φ5×1.5 长(500mm) Hose 5270-φ5×1.5 长(500mm)	1
18	FG-700601-0	通气管支撑垫 Supporting damper of airflow pipe	1
19	SSA3-310501-0	减震垫 Damper	1
20	SSA0-000606-0	油箱胶垫 Fuel tank rubber damper	1
21	SSM0-000506-0	油箱上罩 Upper cover of fuel tank	1
22	SSM0-000507-0	左侧盖 Left side cover	1
23	SSM0-000526-0	电器罩 Electrical cover	1
24	SSM0-000523-0	倒挡手柄罩 Reverse lever cover	1
25	SSM0-006000-0	倒挡装饰罩组合 Reverse lever decorative cover assy	1
26	ZA0-000312-0	自攻螺钉 Self-tapping screw	1
27	SSM0-000508-0	右侧盖 Right side cover	1

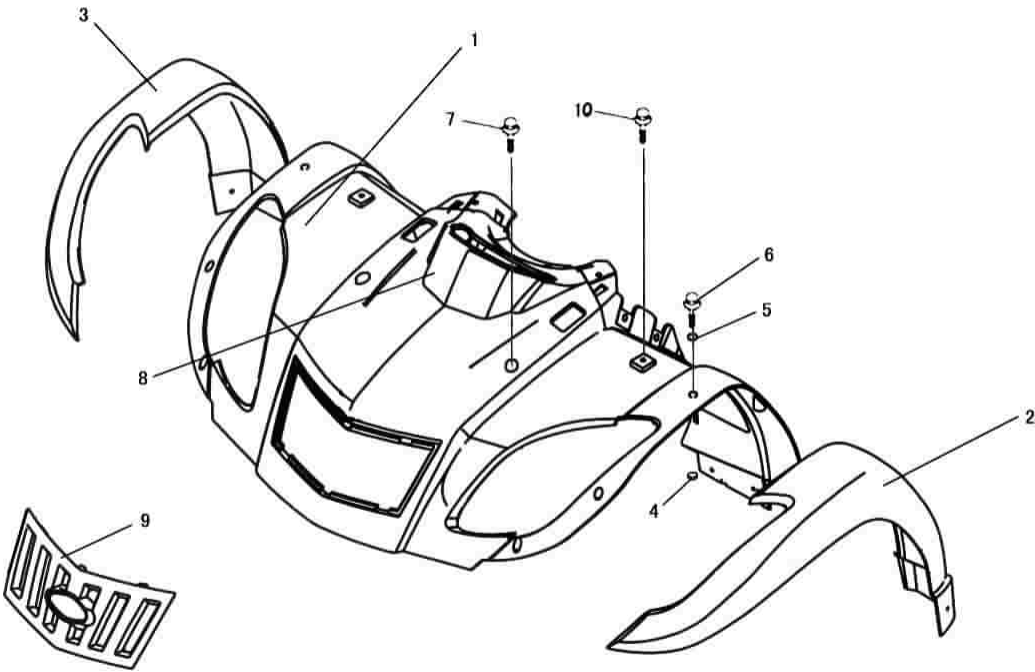
26、油箱、油开关 Fuel tank, Fuel cock



27、前装饰板组合 Front decorative plate assy

[illegible]

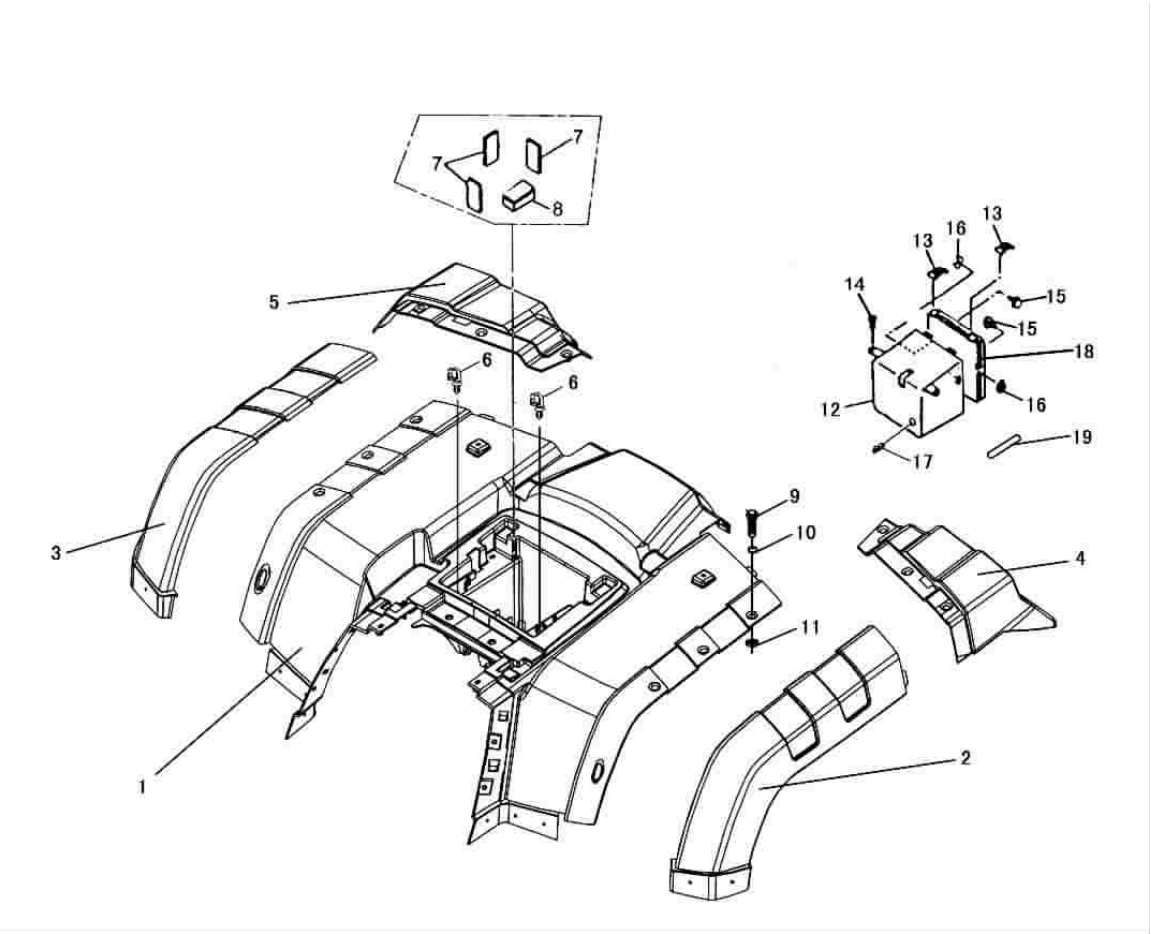
27、前装饰板组合 Front decorative plate assy



28、后挡泥板、工具箱 Rear fender, tool kit

序 号 Ser.No	件 号 Part No	名 称	Description	数量 Q'ty
1	SSM0-000501-0	后挡泥板	Rear fender	1
2	SSM0-000510-0	后挡泥檐板(左)	Rear fender flap (left)	1
3	SSM0-000511-0	后挡泥檐板(右)	Rear fender flap (right)	1
4	SSM0-000516-0	尾灯罩(左)	Taillight cover (left)	1
5	SSM0-000517-0	尾灯罩(右)	Taillight cover (right)	1
6	SSA0-000511-0	线夹 3	Cable clip 3	2
7	CY80.02-14	防震垫	Shock proof pad	3
8	SSA0-000601-0	蓄电池侧垫	Battery side pad	2
9	GB/T 947-1988	螺钉 M6×16	Screw M6×16	22
10	GB/T 96.1-2002	垫圈 6-140HV	Washer 6-140HV	22
11	GB/T 6184-2000	螺母 M6	Nut M6	22
12	SSA0-010000-0	工具箱组合	Tool kit unit	1
13	SSA0-000610-0	工具箱扣	Tool kit catch	2
14	SSA0-013000-0	塑料膨胀钉组合	Plastic expansion screw unit	2
15	Q/JR YP1-92	螺栓 CM6×16	Bolt CM6×16	2
16	GB6187-86	螺母 M6	Nut M6	2
17	SSA0-000512-0	线夹 4	Cable clip 4	1
18	SSM0-010502-0	工具箱盖	Tool kit cover	1
19	SSA0-010401-0	销	pin	2

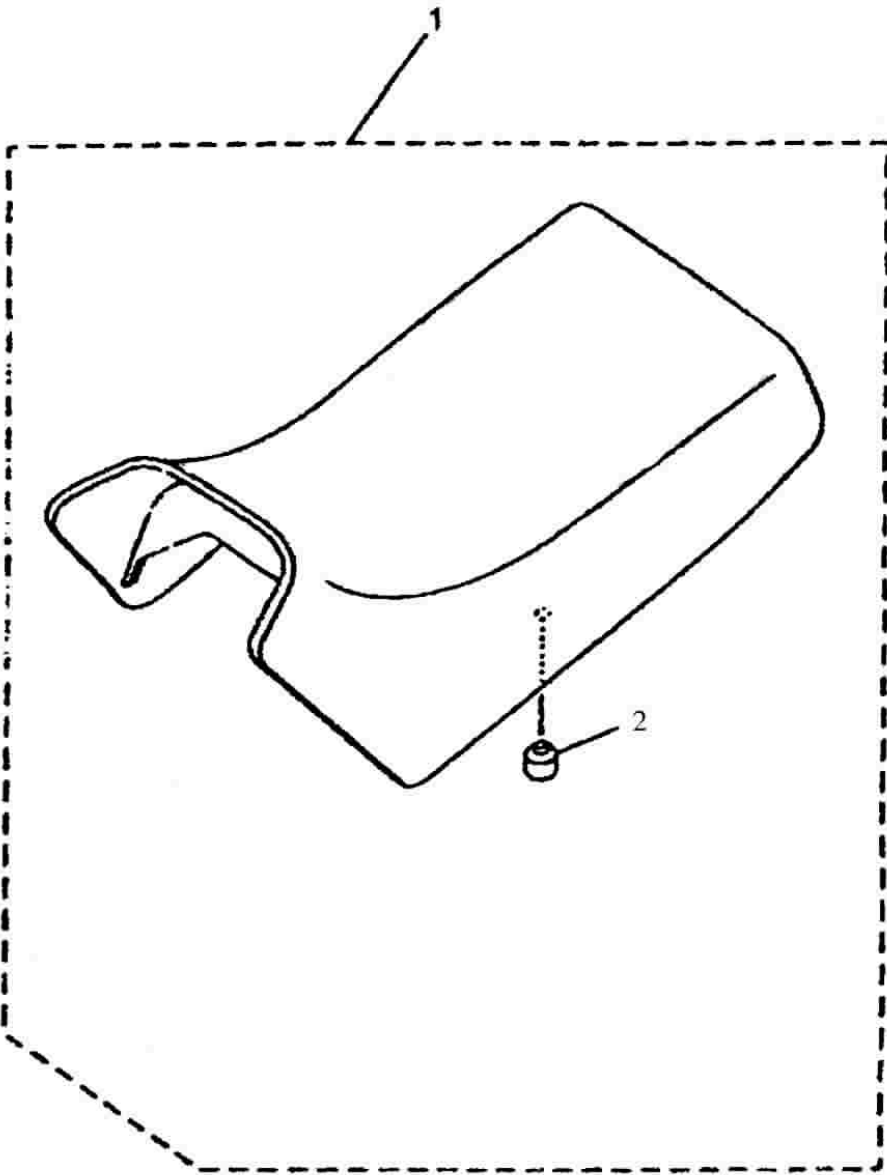
28、后挡泥板、工具箱 Rear fender, tool kit



29、座墊 Cushion

[illegible]

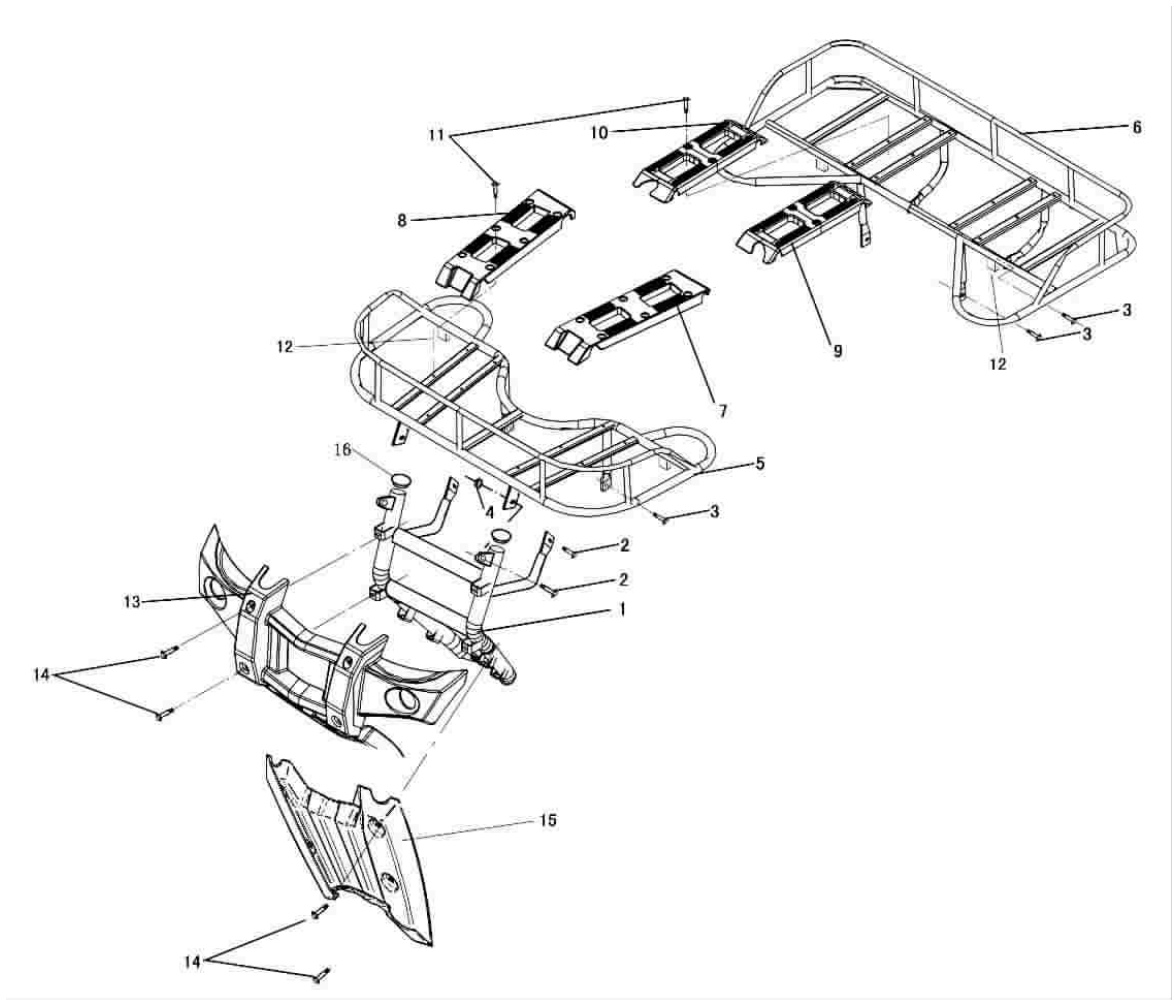
29、座垫 Cushion



30、前后防护架 Front & rear guard bracket

[illegible]

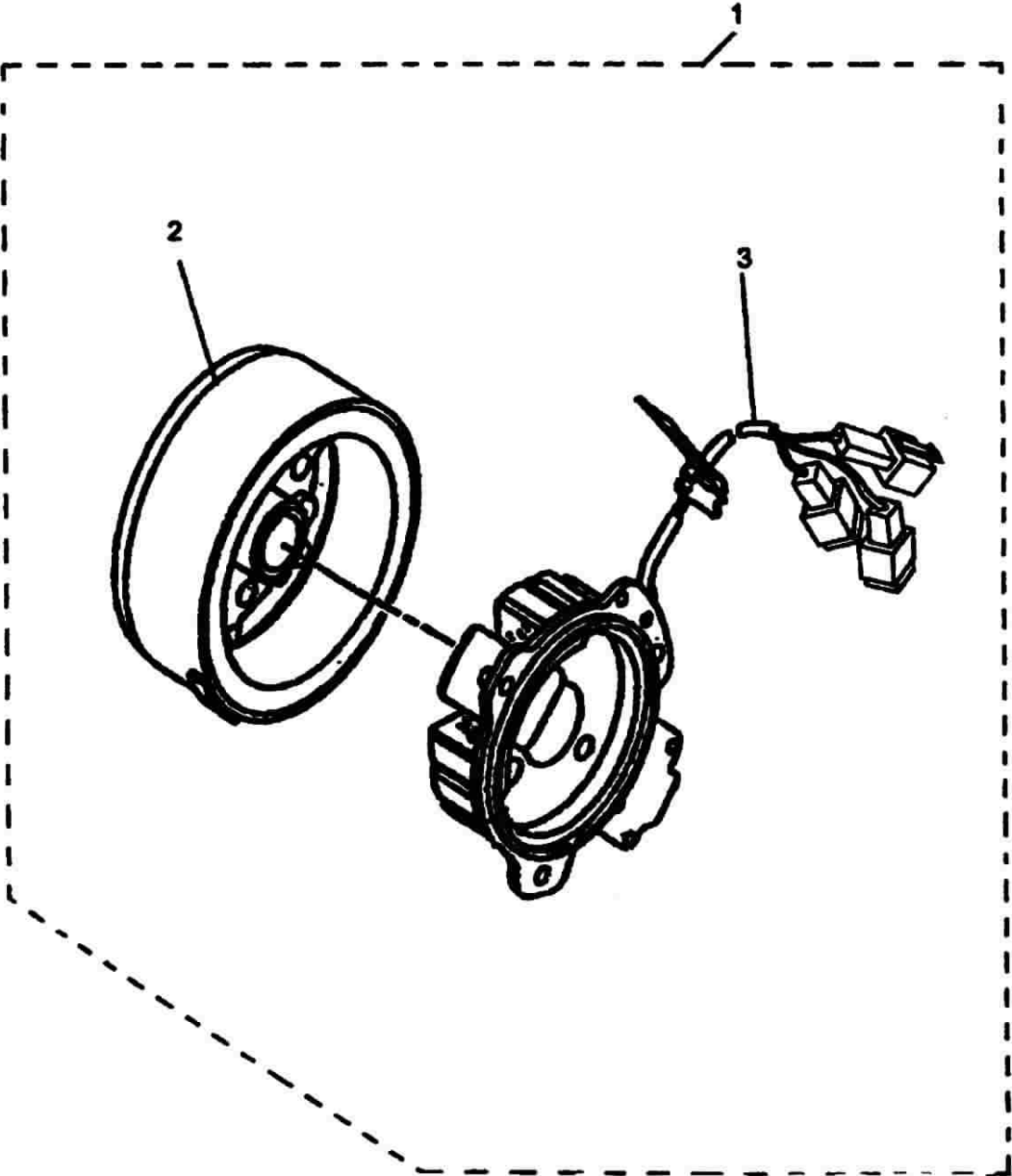
30、前后防护架 Front & rear guard bracke



31、磁电机 Mangeto

[illegible]

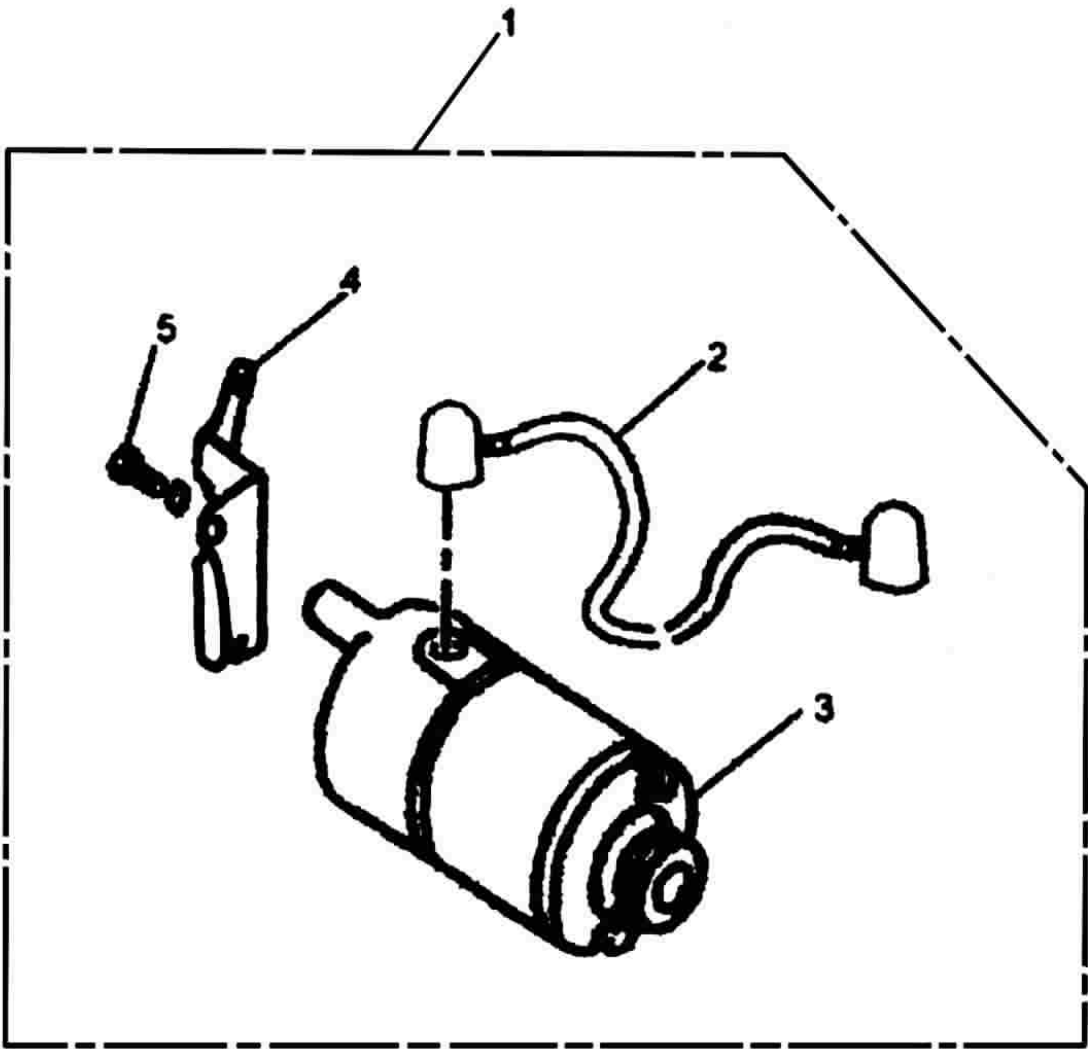
31、磁电机 Mangeto



32、起动电机 Starting motor

[illegible]

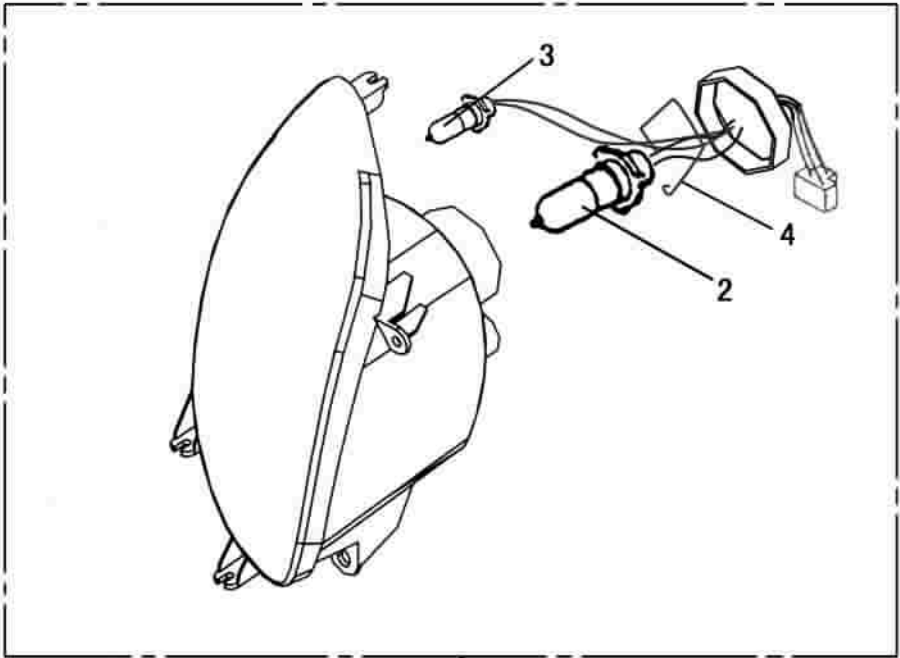
32、起动电机 Starting motor



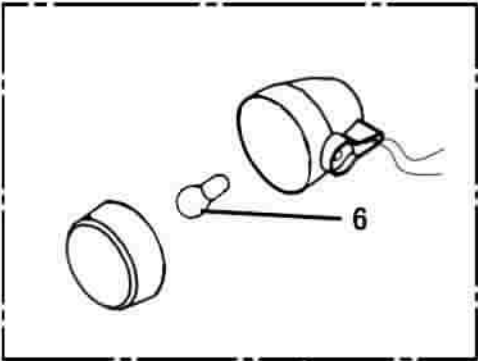
33、前照灯、前转向灯 Headlight & turn signals

[illegible]

33、前照灯、前转向灯 Headlight & turn signals



1

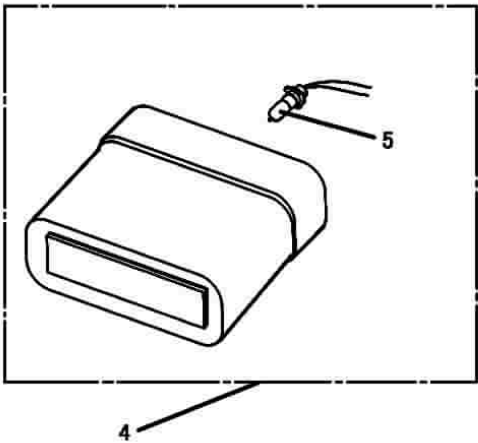
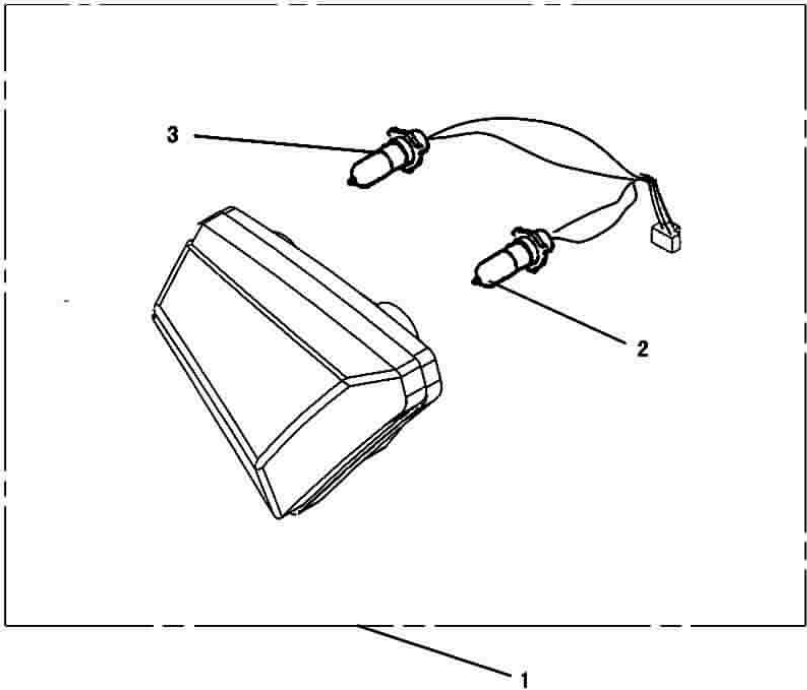


5

34、尾灯、牌照灯 Taillight & license light

[illegible]

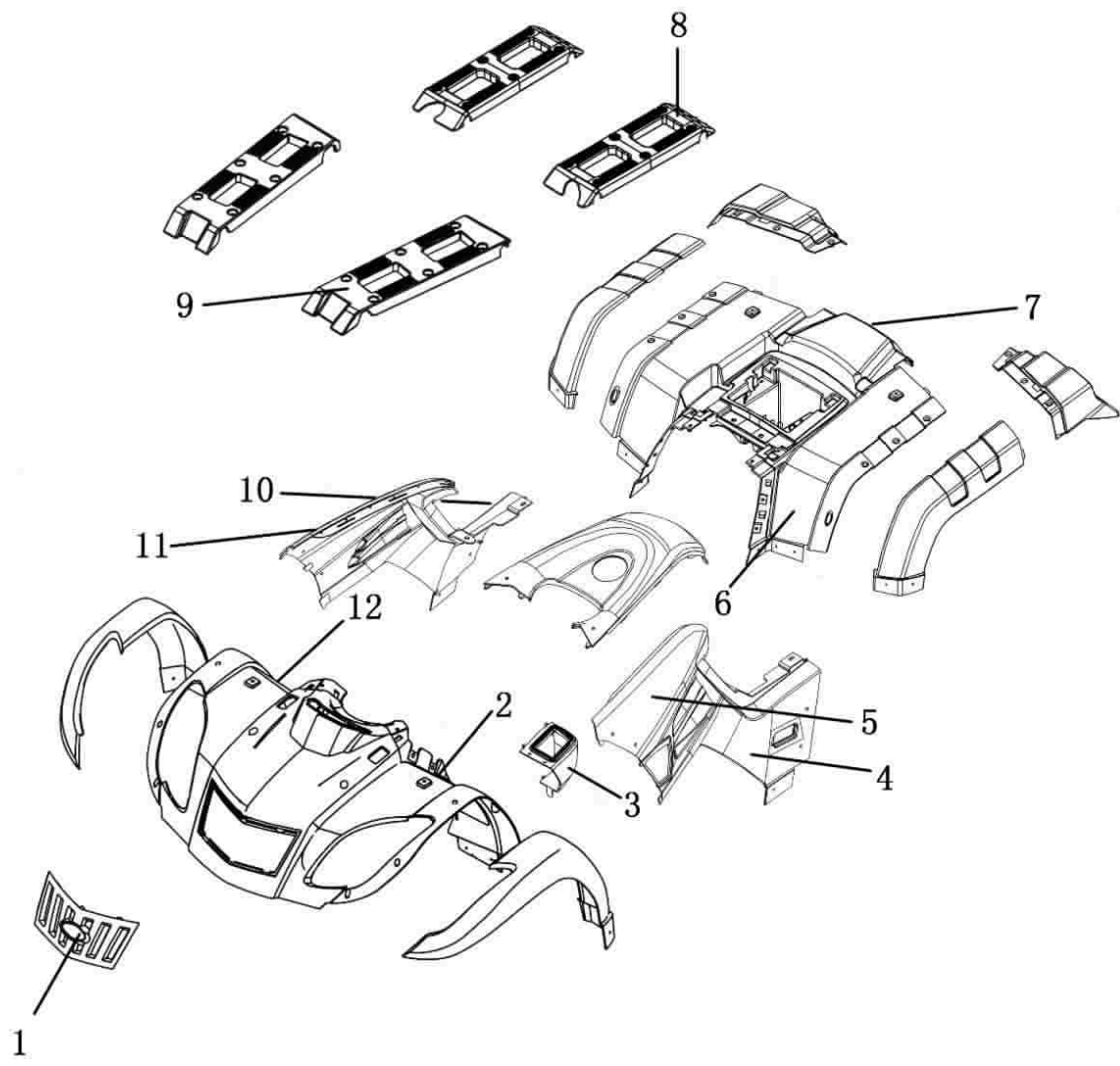
34、尾灯、牌照灯 Taillight & license light



35、标志粘贴 Marking sticker

[illegible]

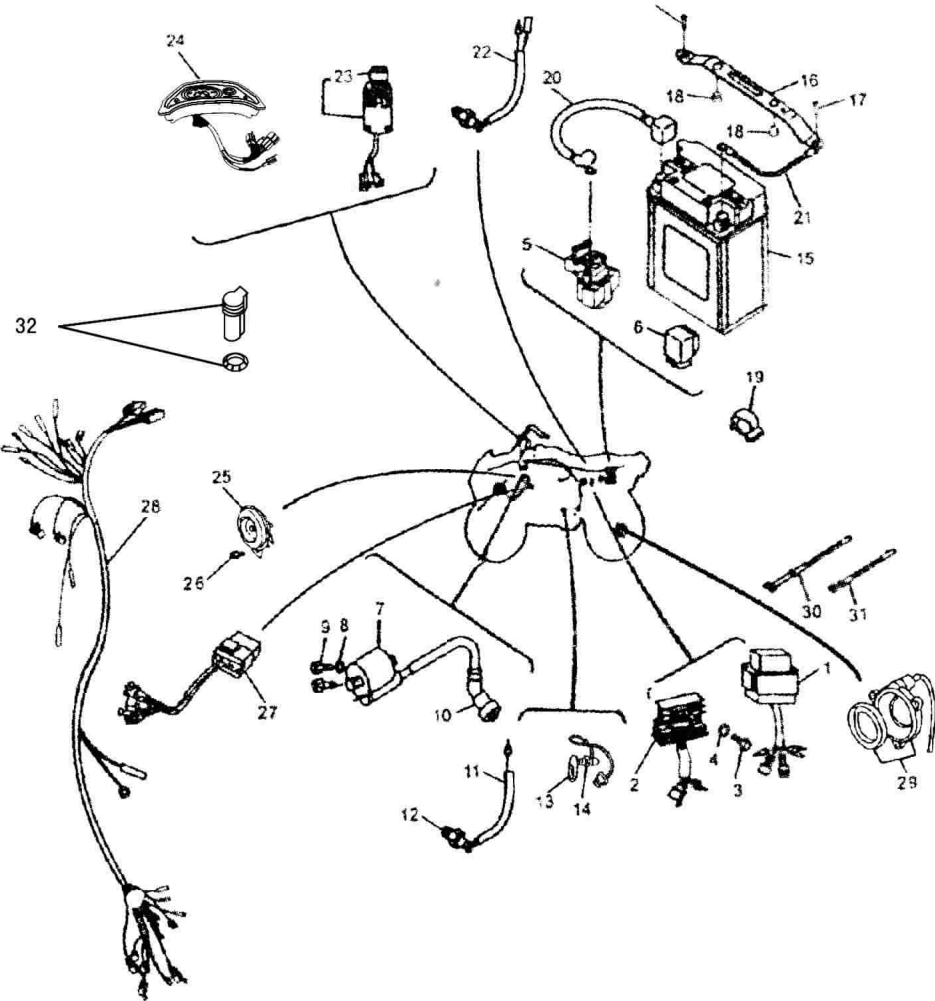
35、标志粘贴 Marking sticker



36、电器系统 Electric system

序 号 Ser.No	件 号 Part No	名 称 Description	数量 Q'ty
1	FG-803000-F2	可控硅触发器 CDI unit	1
2	FG-805000-F2	整流调节器 Rectification regulator	1
3	GB5787-86	螺栓 M6×20 Bolt M6×20	1
4	GB93-84	弹垫 6 Spring washer 6	1
5	FG-804000-F2	起动继电器组件 Start relay assy	1
6	SSC5-540000-0	切断继电器 Shutdown relay	1
7	FG-802000-0	高压线圈组件 High pressure coil assy	1
8	Q/JR YP1-92	组合螺栓 M5×16 Bolt M5×16	2
9	GB93-87	弹垫 5 Spring washer 5	2
10	FG-802003-0	护帽 Protecting cap	1
11	FG-509000-0	倒挡开关 Reverse switch	1
12	FG-500405-0	垫圈 Washer	1
13	F4-D70000-0	挡位发送器 Shift sender	1
14	GB6171-86	螺母 M10×1 Nut M10×1	1
15	SSA5-310000-0	蓄电池组件 Battery assy	1
16	SSA0-000402-0	蓄电池压块 Pressure block of battery	1
17	GB5787-86	法兰面螺栓 M6×20 Flange bolt M6×20	2
18	SSA0-000602-0	蓄电池压块缓冲垫 Buffer pad of battery pressure block	2
19	SSA0-000511-0	线夹 3 Cable 3	2
20	SSA5-312000-0	蓄电池正极导线 Battery positive lead	1
21	SSA5-311000-0	接地线组合 Earth wire assy	1
22	SSA5-530000-3	后制动开关 Rear brake switch	1
23	SSK5-510000-0	总开关锁 Main switch lock	1
24	SSM5-400000-0	数字仪表组件 Numerical instrument unit	1
25	SSA5-710000-2	喇叭组合 Horn unit	1
26	GB5787-86	螺栓 M8×16 Bolt M8×16	11
27	SSC5-770000-0	应急信号控制器 Emergency signal controller	1
28	SSM5-320000-0	电缆 Cable unit	1
29	SSM5-800000-0	传感器组件 Sensor unit	1
30	JS150.00-039	电缆箍带 Cable band	6

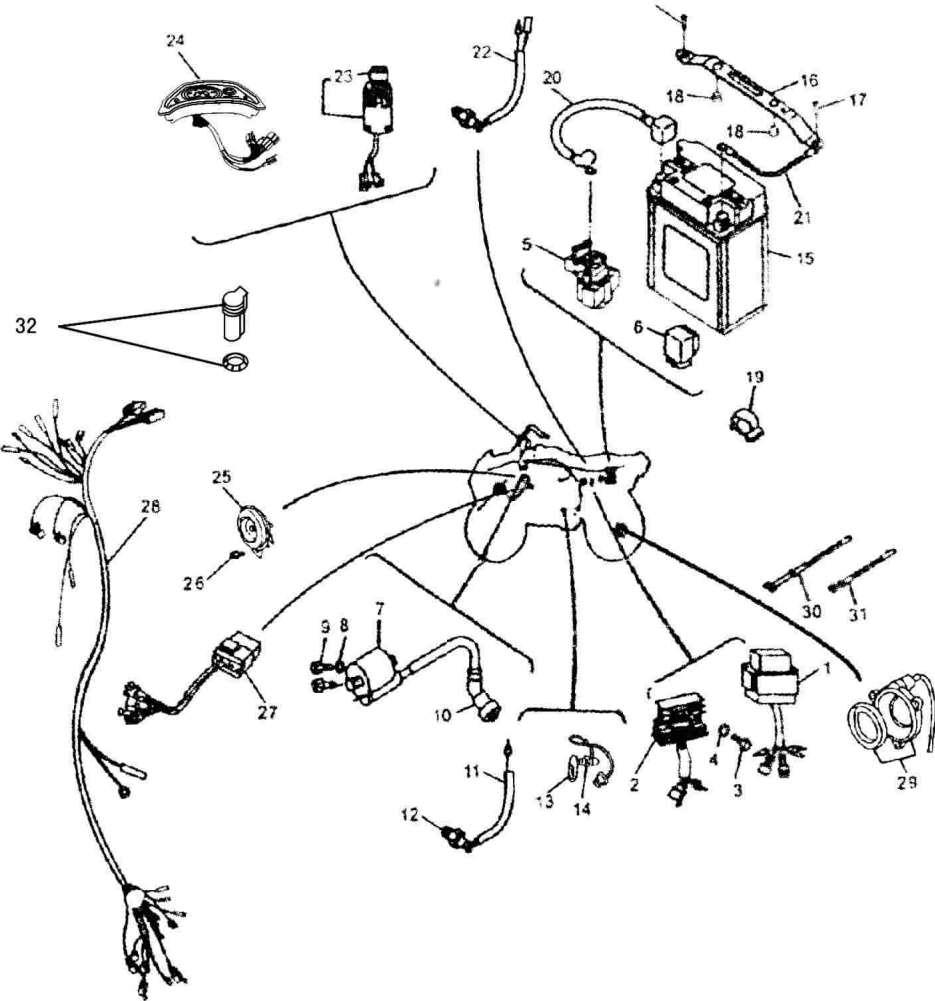
36、电器系统 Electric system



36、电器系统 Electric system

[illegible]

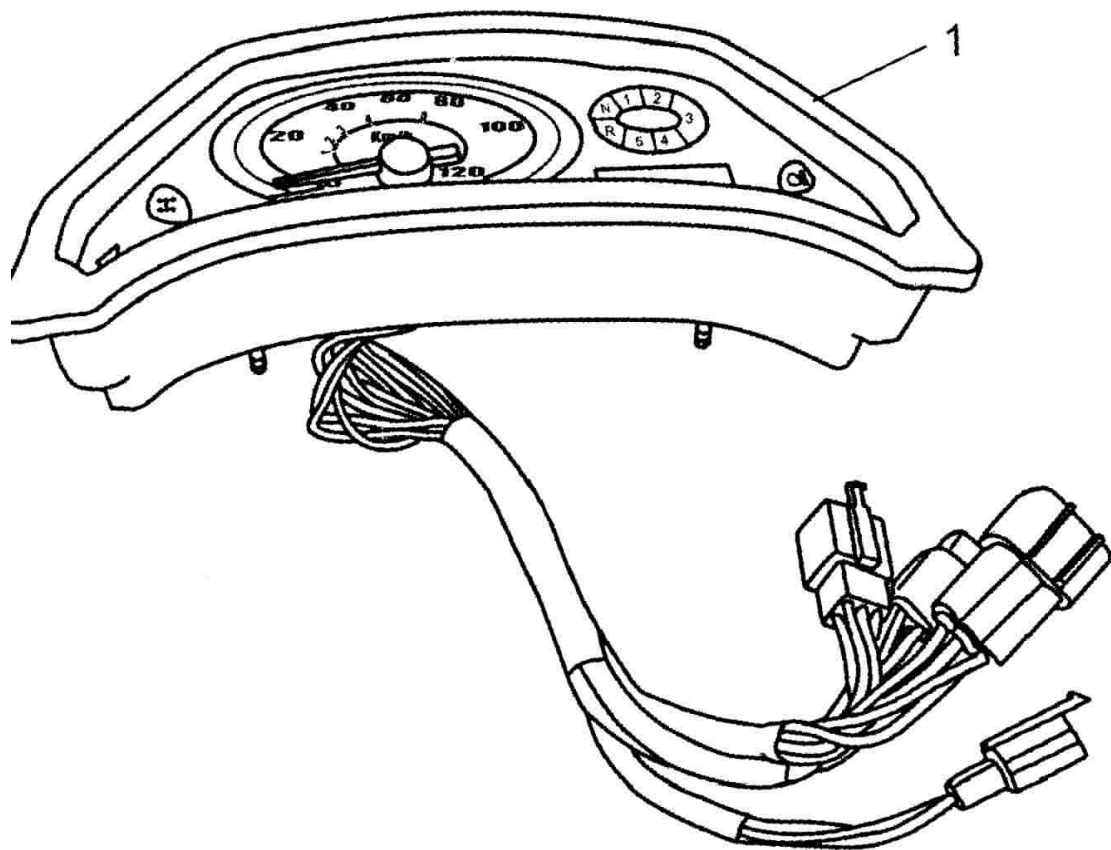
36、电器系统 Electric system



37、仪表 Meter

[illegible]

37、仪表 Meter



目 录 Content

1、配气机构 Pneumatic mechanism	1
2、配气机构(气缸盖)Pneumatic mechanism (cylinder cap)	3
3、曲轴连杆机构 Crank connection rod mechanism	5
4、箱体部分 Crankcase body part	9
5、离合器 Clutch	11
6、换挡操纵机构 Gear shift operation device	15
7、倒档手柄机构 Reverse lever device	17
8、输出机构 Output device	19
9、变速齿轮机构 Change speed gear device	23
10、换挡凸轮、拨叉机构 Shift cam, shift fork device	25
11、润滑系统 Lubrication system	27
12、进气系统 Intake system	29
13、排气系统 Exhaust system	31
14、手起动 Hand starting	33
15、电起动 Electric starter	35
16、车架、后减震器 Frame, rear shock absorber	37
17、前悬挂系统 Front suspension system	39
18、前轮及前制动系统 Front wheel and front brake system	41
19、转向立柱 Steering vertical pole	43
20、方向把操纵系统 Steering bar operation system	45
21、操纵手柄 Operation handle bar	47
22、后轮叉组合 Rear wheel fork unit	49
23、后驱动齿轮箱组件 Rear driving gear box unit	51
24、后轮系统 Rear wheel system	55
25、脚踏操纵 Kick starting operation	59
26、油箱、油开关 Fuel tank、Fuel cock	61
27、前装饰板组合 Front decorative plate assy	63
28、后挡泥板、工具箱 Rear fender, tool kit	65
29、座垫 Cushion	67
30、前后防护架 Front & rear guard bracket	69
31、磁电机 Magneto	71
32、起动电机 Starting motor	73
33、前照灯、前转向灯 Headlight & turn signals	75
34、尾灯组件 Tailight unit	77
35、标志粘贴 Marking sticker	79
36、电器系统 Electric system	81
37、仪表 Meter	85